

# Jewish OC: Community Directory

## תשע"ז 5777-2016-2017



Jewish Federation  
& Family Services  
ORANGE COUNTY

**Jlife**  
ORANGE COUNTY  
JEWISH LIFE



# JEWISH COMMUNITY FOUNDATION ORANGE COUNTY



**The Foundation empowers individuals & families to engage in effective, meaningful giving.**

## **Donor Advised Philanthropic Funds**

Like a charitable savings account, you contribute cash or other assets, receive an income tax deduction at the time of the donation, and make recommendations to your favorite charitable organizations. A simple, effective way to support your favorite causes.

## **Endowment Funds**

A permanent fund that supports your favorite organizations. Funded during the donor's lifetime or through a bequest, life insurance policy or retirement plan. Distribute a fixed percentage of the fund to your favorite charitable organization(s) or area of interest each year into perpetuity.

## **Legacy Giving**

Be a part of our community-wide Create a Jewish Legacy program. Join the more than 280 local families working together to build endowments to support the local Jewish institutions they care about most.

**Whatever you envision... We can create together!**



1 Federation Way, Suite 210, Irvine, CA 92603  
Ph: 949.435.3490 | Fax: 949.435.3499 | [info@jcfoc.org](mailto:info@jcfoc.org) | [www.jcfoc.org](http://www.jcfoc.org)



We are a spiritual, multi-generational, participatory congregation in Orange County, with members at all levels of religious observance, and are inclusive of everyone including those born Jewish, Jews-by-choice, and non-Jews.

Together as an extended family we celebrate the richness of our Jewish heritage by creatively engaging in prayer, study, entertainment, and caring for each other and the greater community.

**We strive to further wholeness within ourselves and our relationships, and to bring about a more just and compassionate world.**

# Congregation

## B'nai Israel

2111 Bryan Ave • Tustin • 92782  
[www.cbi18.org](http://www.cbi18.org) • (714) 730-9693 • [cbi18@cbi18.org](mailto:cbi18@cbi18.org)

Award-winning religious school, youth group, and enriched b'nai mitzvah program

Continuing Jewish adult education

Amy Robinson Katz and Hal'lu  
Musical Shabbat services

Young family Friday  
night services

Sunday morning minyan

Introduction to Judaism,  
for Jews and as a pathway  
to conversion

Infant/Pre-K Child  
Development Center

Hebrew High: Madrikh  
(leadership) program  
and advanced learning  
for Grades 8-12

Youth activities for all  
ages: Machar (K-3),  
Kadima (4-6) and  
USY (7-12)

Torah Study,  
Book Club,  
Mah Jongg

Men's Club,  
Sisterhood and  
Chavurot

Social Action  
opportunities including  
community outreach  
and caring for  
our congregants.

RABBI  
ELIE  
SPITZ





## Because you want the best for your family

**Merage Jewish Community Center of Orange County**  
1 Federation Way, Irvine 92603 • 949.435.3400 • [www.jccoc.org](http://www.jccoc.org)



## CONGREGATION SHIR HA-MA'ALOT



A Reform Community that Feels Like Home...

### Join us for Shabbat Services:

- Family Shabbat
- Tot Shabbat
- Friday Night Live musical services
- Speaker & Author Series



### Our Nationally Accredited Religious School offers:

- Torah Time for Tots
- Pre-K
- K-12 Program with Music, Dance, Art & more
- Madrichim Program
- Youth Groups for Grades 2-12

### Lifelong Learning at SHM:

- Torah Study
- Adult B'nai Mitzvah
- Parent & Family Programs
- Active Temple Community & Social Action Programs



MEMBER

CONGREGATION SHIR HA-MA'ALOT

3652 Michelson Drive • Irvine, CA 92612  
(949) 857-2226 • www.shmtemple.org



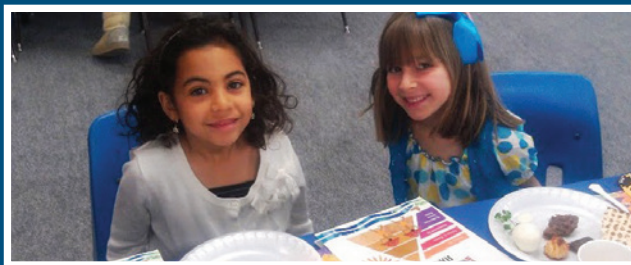
A LIFETIME OF BELONGING

40  
YEARS OF CBT

Congregation  
*B'nai Tzedek*



ק"ק בני צדק



- Warm and Intimate Religious School
- Middle and High School Youth Groups
- Musically-charged Family Shabbats
- Community-oriented Mitzvah Day
- Personal Bar/Bat Mitzvah training

www.cbtfv.org • 714-963-4611  
9669 Talbert Avenue • Fountain Valley, CA 92708



*"Call me for a  
complimentary  
insurance  
and liability  
assessment."*

**949-209-0090**

www.starkmaninsurance.com  
jason@starkmaninsurance.com  
Newport Beach, CA



Jason Starkman



# TABLE OF CONTENTS

## 09 JEWISH FEDERATION & FAMILY SERVICES

## 19 GET INVOLVED

- 20 FAMILIES WITH CHILDREN
- 22 YOUNG ADULTS
- 23 WOMEN
- 24 MEN
- 25 PROFESSIONALS
- 26 SENIORS
- 27 VOLUNTEERING

## 29 SOCIAL SERVICES

## 35 SENIOR SERVICES

## 41 JEWISH LEARNING & LEADERSHIP

- 42 PASSPORT TO JEWISH LIFE®
- 43 KIDS & TEENS
- 49 COLLEGE STUDENTS & NEXTGEN
- 52 ADULTS

## 57 ISRAEL & OVERSEAS

## 65 JEWISH LIFECYCLE & PRACTICES

- 70 JEWISH HOLIDAYS 2015-2016
- 73 KOSHER IN OC
- 80 CONGREGATIONS & RABBIS

## 88 JEWISH ORGANIZATIONS INDEX

## 94 ADVERTISING INDEX

# WELCOME LETTER



**Jewish Federation  
& Family Services**  
ORANGE COUNTY

Dear Friends,

We are very pleased to present to you this comprehensive community directory of Jewish Orange County for the 2016-2017 Jewish calendar year (5777). **Jewish OC: Community Directory** is produced and distributed free of charge by Jewish Federation & Family Services, Orange County (JFFS) in partnership with JLife magazine.

In this edition you will find information about our community and many of the services and extraordinary opportunities for involvement and learning it has to offer, as well as information about Jewish holidays, kosher food in OC and more.

From a listing of local congregations, to information about Jewish day schools, religious and Hebrew classes in OC, Israel experiences, resources for college students, community involvement for children, families, adults and seniors, social services, volunteering and much more, this directory has something for everyone. Browse the pages to explore the best of Jewish OC.

To see or submit ongoing community events, you can always go online to our Community Calendar: **JewishOC.org/Calendar**. And, of course, we at JFFS are always more than happy to lend a hand, be it with information, opportunities or services. Please contact us: **Info@JFFS.org** or **949-435-3484**.

We hope you enjoy this free resource, and wish everyone in our community an extraordinary 2016-2017/5777 Jewish year!

**Arlene Miller**  
President & CEO, JFFS

**Daniel J. Koblin**  
Chair of the Board, JFFS

**EDITORS:**  
Kathleen Mellon  
Jillian Weyman

**PUBLISHER:**  
Orange County Jewish Life, LLC

**PRINTING:**  
American Web

**ART DIRECTION & DESIGN:**  
Laurie Miller, [lauriemillerdesign.com](http://lauriemillerdesign.com)

**CREATIVE DIRECTION/COVER DESIGN:**  
Caron Berkley  
Bella Drabinsky

Listings and advertisements in this directory do not represent an endorsement, by Jewish Federation & Family Services or JLife, of any goods, products, services, positions or actions of the listed individuals, companies and organizations. ©2016 Jewish Federation & Family Services/JLife. All rights reserved. No portion of this publication may be reproduced without the express written permission of Jewish Federation & Family Services and JLife.





STODDARD GROUP

PROTECTING YOUR FAMILY SINCE 1998

# LIVING TRUST

INCLUDING POWER OF ATTORNEY & WILL

**\$289\* FOR JLIFE READERS**

LDA#381 / PROMO CODE: 7526

\*PLUS RECORDING FEES (\$12 TO \$17)

INCOME PLANNING / ASSET PROTECTION / ESTATE PRESERVATION / COMPREHENSIVE REVIEWS

THESTODDARDGROUP.COM / 949.558.3181



# IRVINE HEBREW DAY SCHOOL

## EXPERIENCE INNOVATIVE EDUCATION

Kindergarten  
through 3rd Grades

**APPLY NOW FOR  
2016-2017**



- Inquiry-based Experiential Learning
- Highest Standards for Academic Achievement
- Meaningful Jewish Study
- Teaching Positive Philosophy



## TOUR OUR NEW CAMPUS

Temple Beth Sholom  
2625 N. Tustin Avenue  
Santa Ana 92705

**(949) 478-6818**

**www.irvinehebrewday.org**



# Where is your Jewish GPS taking you?

Discover multiple  
on-ramps to  
Judaism at  
Temple Beth El.



Check Us Out



Reform & Conservative  
Programs & Services



**CALL OR VISIT FOR  
MEMBERSHIP INFORMATION**

*The Samuelli Center for Progressive Judaism*

2A LIBERTY ALISO VIEJO, CA • 949.362.3999

www.TBESOC.ORG



# TOGETHER, WE DO THE EXTRAORDINARY



Jewish Federation & Family Services, Orange County (JFFS) has been active in Orange County since 1965, helping to build a vibrant community, to enhance Jewish life and to provide extraordinary services across the age spectrum.



# OUR MISSION

## WHO WE ARE

A nonprofit corporation, **Jewish Federation & Family Services of Orange County (JFFS)**, has been active in the Orange County community since 1965 when it was officially incorporated under its original name Jewish Federation Council of Orange County. The name was changed to its current form following its 2011 merger with Jewish Family Service of Orange County.

## WHAT WE DO

The mission of Jewish Federation & Family Services is to bring together the **people**, the **partners**, and the **resources** to **care** for people in need, to **build** a vibrant community, and to **sustain** and **enhance** Jewish life.

## WHO WE SERVE

JFFS provides a broad array of grants to institutions in Orange County and Israel, and numerous opportunities for engagement, social action and philanthropy.

Guided by Jewish traditions of social responsibility, compassion and respect for all, JFFS provides exceptional social services that support and strengthen people of all ages, beliefs, and backgrounds to help them reach their full potential.

**All that we  
do is made  
possible by  
the generous  
support  
of our  
community.  
Together,  
we do the  
extraordinary.**

**EMAIL:**  
[Info@JFFS.org](mailto:Info@JFFS.org)

**FOR MORE INFORMATION:**  
[JewishOC.org](http://JewishOC.org)



In recognition of our sound  
fiscal management and  
commitment to  
**ACCOUNTABILITY**  
and  
**TRANSPARENCY,**

Charity Navigator –  
America's premier charity  
evaluator – awarded JFFS  
its sixth consecutive 4-star  
rating in June 2016. Only  
4% of charities evaluated  
by Charity Navigator  
have received at least  
6 consecutive 4-star  
evaluations.





# JFFS GRANTS & LOANS



JFFS exists to serve our community, in Orange County, in Israel and around the world. We are dedicated to increasing community philanthropy, toward the goal of providing more grants and services, and underwriting activities that engage more people in building community and sustaining Jewish life.

The JFFS Planning & Funding Council, comprised of 17 lay leaders involved with numerous community organizations, directs JFFS Core Grants and Impact Grants to our community institutions, and oversees committees of lay leaders who direct our additional grant activities described on this page.

Through our partnership with Jewish Free Loan Association (Los Angeles), JFFS also offers small business micro-loans.

**Core Grants** are made annually to JFFS Community Partners (The Hebrew Academy, Hillel Foundation of Orange County, Merage Jewish Community Center and Tarbut V'Torah Community Day School) to support their broad range of activities.

**Impact Grants** are made annually through a Request for Proposals (RFP) process open to Jewish organizations and congregations in Orange County. Contact **Grants@JFFS.org** for details and deadlines.

**Passport to Jewish Life®** education grants are available to OC families for religious school, Jewish camp, Maccabi experiences, Israel trips and more, for 4<sup>th</sup> grade through age 22. Each year, over 200 Passport grants are awarded. Information and application can be found at **JewishOC.org/Passport**.

**Connect 2 Israel** grants support projects in Israel and Israel-related projects in Orange County. Email **Grants@JFFS.org** for information on focus areas and RFP process.

**Family Philanthropy Venture Fund** is a group of families with school-age children who support projects within the mission of JFFS that have the potential to become self-sustaining and address unmet needs in our

community. Email **Grants@JFFS.org** for information on focus areas and RFP process.

**Rose Project Grants** are available for Jewish campus organizations, student subsidies for Israel education, advocacy training and leadership development programs, and academic engagements between OC and Israeli universities. Applications for Rose Project grants accepted and determined on a rolling basis. Email **Lisa@JFFS.org** for more information.

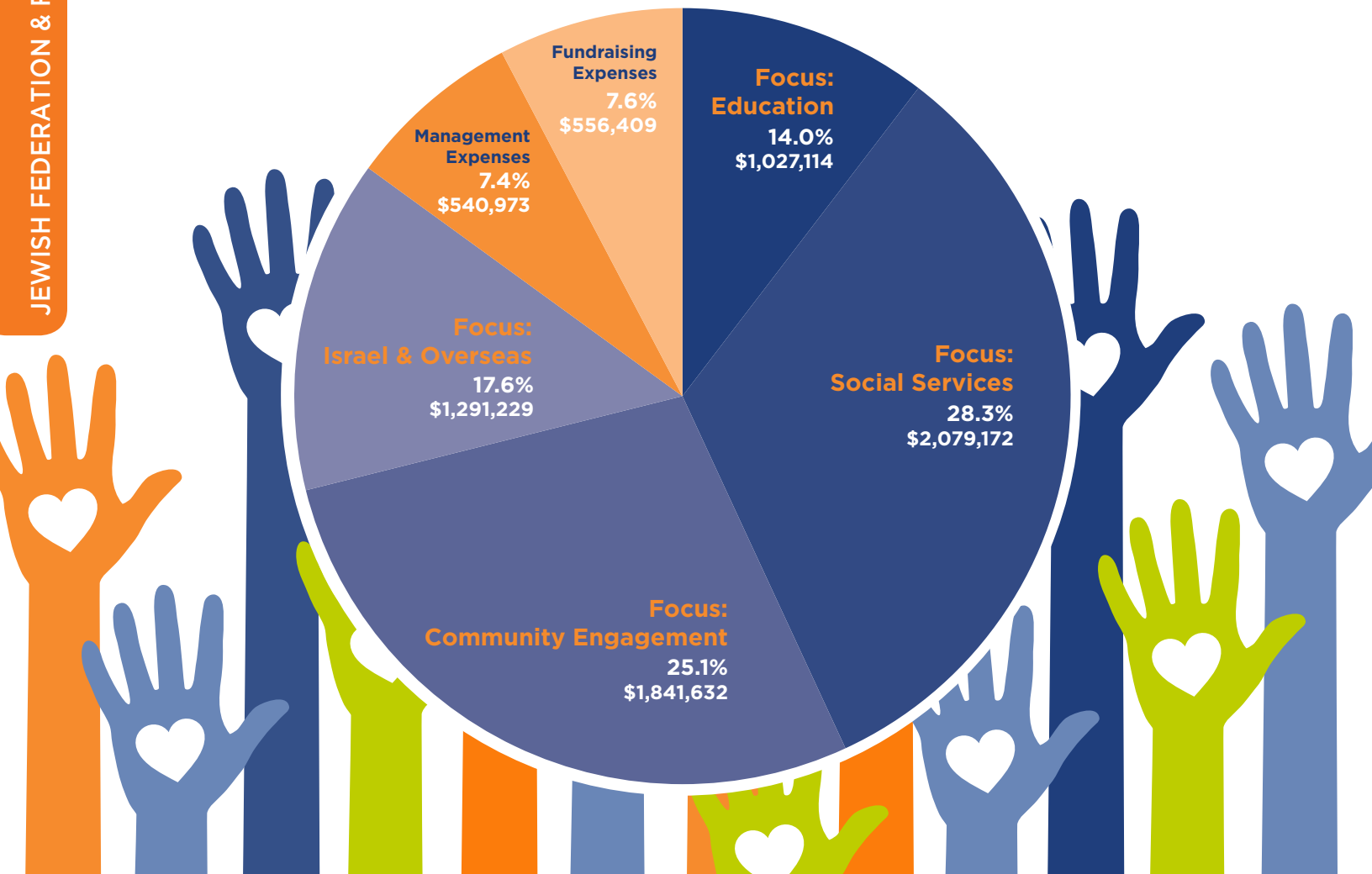
**Cohen Grants for College Students** are one-time, non-renewable grants of \$500 each. Jewish college/university students whose families reside in OC are eligible to apply. Visit **JewishOC.org/CohenGrant** to learn more and apply.

**Milton & Doris Chasin Micro-Enterprise Loan Program** offers interest-free micro-loans (up to \$25,000) for startups or existing small businesses in partnership with Jewish Free Loan Association (Los Angeles). Orange County residents of all backgrounds are invited to apply. Visit **JewishOC.org/ChasinLoan** for details, or email **Assist@JFFS.org**. For non-business loan inquiries (such as education loans), visit **jfla.org**.



# WHERE THE \$ GOES

Jewish Federation & Family Services raises funds from generous donors like you to support vital grants, services and initiatives that strengthen our community and Israel.



|             |             |       |
|-------------|-------------|-------|
| Focus Areas | \$6,239,147 | 85.0% |
| Fundraising | \$556,409   | 7.6%  |
| Management  | \$540,973   | 7.4%  |

2015: JFFS TOTAL USE OF FUNDS \$7,336,529 100%





# HOW TO GIVE



JFFS offers many options to maximize your support and ensure a vibrant, strong community across the age spectrum for generations to come.

**Generations Fund** is the JFFS annual campaign, from January 1st to December 31st each year. Generations Fund sustains our community through Core Grants to our Community Partners; through Impact Grants to Jewish organizations and congregations across OC; and through a broad range of social services, leadership development opportunities and outreach programs benefiting our entire community.

In addition to making a Generations Fund investment in our community, you can support a specific area of interest – Caring, Israel, Leadership, Learning, and People – through JFFS **Connect 2 Community Initiatives**.

**Match-maker, match-maker!** Did you know that many companies have gift-matching programs that will match your donation to JFFS dollar for dollar? It's a great way to maximize your personal contribution and increase YOUR impact for the community!

**Other Meaningful Ways to Give:** Individual and Corporate Sponsorships, Monthly Giving and Tribute Cards are some of the other ways you can give to JFFS. JFFS also participates in the Amazon Smiles program. Learn more at **[JewishOC.org/giving](https://JewishOC.org/giving)**.

Through the JFFS **Legacy Circle**, you can invest in your Jewish community for generations to come. Your legacy gift serves as a testament to your loved ones of your belief in the importance of sustaining Jewish life. Creating a

**GENEROSITY,  
COMPASSION,  
HELPING  
OTHERS. OUR  
VALUES.  
OUR  
HERITAGE.**

Jewish legacy begins with listing JFFS as a beneficiary of your estate – through your will, trust, life insurance, IRA or other appreciated assets. We can help you structure your legacy to fit your lifestyle, goals, family and financial needs.

Most people leave an estate when they pass away, whether or not they have a great deal of wealth. “Estate” is simply a word used to describe any money, property or personal belongings that you own at the time of your passing. Your legacy can, and should, reflect what is most important to you. Creating a legacy empowers you to complete the work of your heart.

## **FOR MORE INFORMATION:**

**DONATE:** [JewishOC.org/Giving](https://JewishOC.org/Giving)

**LEGACIES:** [Chelle@JFFS.org](mailto:Chelle@JFFS.org)



## Create a Jewish Legacy

### Your gift makes a difference.

Something wonderful and extraordinary is happening in Jewish OC! People across our community are signing a Letter of Intent with a promise to **leave a legacy gift to Jewish Federation & Family Services**. In your will or estate plan, you can leave a gift that **supports the work you believe in, strengthens the Jewish community, and speaks to your values.**

**“We’re leaving a gift in our will to JFFS.  
It’s more than a donation. It’s our legacy.”**

### To create your Jewish Legacy contact:

Chelle Friedman, Director of Planned Giving  
Jewish Federation & Family Services, Orange County

**949.435.3484, Ext. 334**

**Chelle@JFFS.org • JewishOC.org**



**Jewish Federation  
& Family Services**  
ORANGE COUNTY



**Jewish Federation  
& Family Services**  
ORANGE COUNTY

## Match-maker, Match-maker!

**4**  **simple  
steps**

**to increase your impact  
with a **matching gift**  
from your employer:**

- 1** Check with your company's HR department if a Matching Gifts Program exists.
- 2** Ask HR for a copy of the Matching Gift Form and complete your portion.
- 3** Submit that form to us! Here are a few ways:
  - **E-mail:** DonorServices@jffs.org
  - **Snail mail:** JFFS, Attn: Finance  
1 Federation Way  
Irvine, CA 92603-0174
  - **Fax:** 949.936.2802, Attn: Matching Gifts
- 4** Make your pledge payment!  
Watch it double!

**JewishOC.org/Match**





**Together,**  
we do the extraordinary

## Our Community Partners



## Congregations

Beit HaLev • Beth Jacob Congregation of Irvine • Chabad at UCI • Chabad Center for Jewish Life Newport Beach • Chabad of Aliso Viejo and Laguna Woods • Chabad of Irvine • Chabad of Laguna Beach • Chabad of Laguna Niguel • Chabad of Los Alamitos/Cypress • Chabad of Mission Viejo • Chabad of North Irvine • Chabad of Rancho S. Margarita • Chabad of S. Clemente • Chabad of South Huntington Beach • Chabad of Tustin • Chabad of West Orange County/Congregation Adat Israel • Congregation Beth Meir HaCohen/Chabad • Congregation B'nai Israel • Congregation B'nai Tzedek • Congregation K'hilat Horim • Congregation Shir Ha-Ma'alot • Congregation Sholom Leisure World • Pacific Community of Cultural Jews • Rabbi Corie Yutkin • Rabbis Larry & Linda Seidman • Reform Temple of Laguna Woods • Surf City Synagogue/Temple Isaiah • Temple Bat Yahm • Temple Beth David • Temple Beth El of South Orange County • Temple Beth Emet • Temple Beth Ohr • Temple Beth Sholom of Orange County • Temple Beth Tikvah • Temple Judea • University Synagogue • Young Israel of OC

## Organizations

30 Years After • American Israel Public Affairs Committee • American Jewish Committee • Americans for Peace Now • Anti-Defamation League • Beit T'Shuvah • Bet Tzedek Legal Services • Birthright Israel • Bubbe & Zayde's Place • Family Autism Network/Grandparent Autism Network • Friendship Circle • Hadassah • Hebrew Club Laguna Woods • Heritage Pointe • Irvine Hebrew Day School • Israeli American Council • Jewish Addiction Awareness Network • Jewish Communal Professionals of Southern California • Jewish Cultural Club Laguna Woods • Jewish Federations of North America • Jewish Free Loan Association • Jewish National Fund • Jewish War Veterans • JQ International • JStreet • Moishe House • National Council of Jewish Women • OC Israeli • Orange County Community Scholar Program • Orange County Jewish Bar Association • Orange County Jewish Genealogical Society • ORT • Rohr Jewish Learning Institute • Shevet Tapuz Israeli Scouts



# JFFS BOARD OF DIRECTORS

Comprised of top professionals and dedicated community leaders, our Board brings an array of complementing experience and expertise to the table. Together, everyone works hard year-round to meet the needs of our community, today and for the future.



**DANIEL J. KOBLIN**  
Chair of the Board



**ARLENE MILLER**  
President & CEO

## OFFICERS

### Treasurer

Susan Levinstein

### Secretary

James Weiss, MD

### Vice Chair Family Services

Lori Reznick

### Vice Chair Nominations & Governance

Stuart Wolfe

### Vice Chair Planning & Funding

Lori Schwartz

### Vice Chair Community Campaign

Bernie Labowitz

### Immediate Past Chair Major Gifts Chair

Debbie Margolis

## DIRECTORS AT LARGE

Yael Aronoff

Kenneth Beard

Mark Berman

Frank Ellis

Rabbi Dovid Eliezrie

Lisa Grier

Heather Kline

Rabbi Peter Levi

Ally Mars

Adam Miller

Howard Mirowitz

Blossom Siegel

Deborah Siminou

Michael Stoll

Sam Wyman





# PRESERVING OUR PAST



The Fainburg Family, 1921



Past presidents of Women's Division gather for a group portrait. Front row, from left: Ellie Burg and Helen Aaron. Back row: Polly Sloan, Gladys Esensten and Sophia Hoffman.

With Jewish roots going all the way back to its very founding, it is no wonder that Orange County today has such a thriving, vibrant Jewish community. Here is a look at some key events in OC's Jewish history:

**1857** Charles Kohler and John Frohling, two Jewish German immigrants, create the Los Angeles Vineyard Society, recruiting investors and settlers, mostly fellow Germans, many of whom were Jewish, for what would become the town of Anaheim.

**1858** Benjamin Dreyfus, a Bavarian Jew, opens a store in Anaheim and is the first Jew to settle there.

**1881** B. Dreyfus & Company is the largest winery in the state and Dreyfus is mayor of Anaheim. A tailor named Morris Mendelson conducts High Holy Day services in the home of the town butcher Bernard Cohen; the son of Louis Wartenberg, Anaheim's first Jewish town marshal, is circumcised; and the Anaheim

Hebrew Cemetery Association is formed.

**1889** Orange County is officially formed.

**1914** Morris Nasatir acquires a Torah, and his son's bar mitzvah, as well as Shabbat and High Holiday services, are held in his home in Santa Ana.

**1943** The first congregation, Temple Beth Sholom, is established in Santa Ana, and two years later becomes the first Jewish institution in OC to have its own premises, on Bush Street.

**1965** Jewish Federation is officially incorporated in OC and run by volunteers for its first 6 years.

**1967** Hillel is started

**1970** The first Federation Women's Philanthropy (then known as "Women's Division") is formed.

**1987** The Baker Street Jewish Community Campus opens in Costa Mesa, thanks to a pacesetting donation of land and a building by Allan Fainburg and Arnold Feuerstein.

**2004** The 40 acre Samuelli Jewish Campus opens, housing the Tarbut V'Torah Day School, the Meraige Jewish Community Center, one of the country's largest JCCs, and many other OC Jewish organizations, including Jewish Federation & Family Services.

## Orange County Jewish Historical Society

JewishOC.org/Historical  
949-435-3484, ext. 296.  
History@JFFS.org

Founded in 1999, the OCJHS became a Connect 2 Community Initiative of JFFS in 2012. The Society is responsible for increasing awareness of the role Jews have played in the development of Orange County. Dalia Taft, the archivist, lectures regularly about the different significant periods in Orange County's Jewish History and publishes a monthly column in JLife highlighting images from the Society's archives. The Society also produced the well-received documentary California Orange Jews: The Story of the Jews of Orange County, which has been shown at international film festivals and is available for screenings.

The Rodgers Center for Holocaust Education  
The Sala and Aron Samuelli Holocaust Memorial Library  
The Stern Chair in Holocaust Education

## *Educating Witnesses to the Future*

---

Distinguished Scholar and Holocaust Survivor Lecture Series

Artifact and Photograph Exhibits

---

Permanent exhibit of Holocaust-era artifacts

---

Interactive iPad Displays

*Holocaust Survivors: The Indestructible Spirit*

### **Annual Events**

---

Evening of Holocaust Remembrance

*Kristallnacht: A Night of Broken Glass and Shattered Community*

An Interfaith Service of Remembrance

Annual Holocaust Art and Writing Contest  
for middle and high school students

[www.chapman.edu/holocausteducation](http://www.chapman.edu/holocausteducation) • (714) 628-7377

One University Drive, Orange, CA 92866

Visit us on Facebook at [www.facebook.com/RodgersCenter](http://www.facebook.com/RodgersCenter)

Follow RodgersCenter on Twitter



CHAPMAN  
UNIVERSITY



# GET INVOLVED

GET INVOLVED



Whatever your age, gender, background or interests, JFFS has ways for you to get involved and connect to community. From activities for families with children, to groups for young adults (21+), men, women, professionals and seniors (55+), to networking, social gatherings, leadership and volunteer opportunities and much more – JFFS is the place to be!



# FAMILIES WITH CHILDREN



**MEET OTHER  
JEWISH FAMILIES,  
ENGAGE  
IN JEWISH  
ACTIVITIES AND  
SHARE JEWISH  
VALUES WITH  
YOUR CHILDREN.**

## SHALOM FAMILY

Our strong commitment to engaging families with young children is seen in three key initiatives.

**Shalom Family** connects new parents and their children to one another and to the Jewish community. Through fun, interactive events, Shalom Family helps foster relationships that will last a lifetime. Activities include:

- Social meet-ups
- Holiday-themed events
- Community Shabbat dinners
- PJ Library story hours
- Collaborative events with congregations

**Shalom Baby** welcomes each Jewish newborn in our community with a gift bag filled with information about what's available to them in Jewish Orange County, and connects each recipient family to Shalom Family for ongoing engagement.

**PJ Library** supports families in their Jewish journey by sending free Jewish-content books and music every month to families raising Jewish children age 6 months to 8 years. PJ Library is made possible by Jewish Federation & Family Services, the Jewish Community Foundation of Orange County, the Harold Grinspoon Foundation, and local philanthropists. (See page 48).

Contact us today to learn about all of our current and upcoming Shalom Family and PJ Library events! Don't see what you are looking for? Let us know! There may be other parents interested in starting a new group, playgroup or event.

### CHAIR:

Margo Marcus, 2016-2017

### STAFF CONTACT:

Stephanie Epstein

### EMAIL:

ShalomFamily@JFFS.org

### FOR MORE INFORMATION:

JewishOC.org/ShalomFamily





# FAMILIES WITH CHILDREN



**HANDS-ON  
LESSONS IN  
PHILANTHROPY  
AND GIVING  
FOR THE WHOLE  
FAMILY.**

## FAMILY PHILANTHROPY

Family Philanthropy Venture Fund of JFFS (FPVF) brings together families with school-age children who invest in building community through grants to Jewish organizations in Orange County and Israel.

### Family Philanthropy has two primary objectives:

The **first** is to seek out and support programs that strengthen the Jewish community.

The **second** is to provide children with hands-on experiences that build character, to teach them that every good deed makes a difference and to live a life of giving back to others.

Each family invests a minimum of \$2,500 in the Generations Fund of JFFS (see page 13). Parents and children together are significantly involved in the grant decision process.

Since its inception in 2006, the FPVF has provided over **\$700,000** in support of projects in OC and in Israel. In 2104, members of the FPVF went on a mission to Israel and visited programs they have funded.

Contact us today to learn more about how you and your family can share the joys of philanthropic giving and hands-on involvement in our community.

### CHAIR:

Sam Wyman

### CO-CHAIRS:

Yael Aronoff  
Deborah Siminou

### STAFF CONTACT:

Doris Jacobson

### EMAIL:

Doris@JFFS.org

### FOR MORE INFORMATION:

[JewishOC.org/FamilyPhilanthropy](http://JewishOC.org/FamilyPhilanthropy)



# YOUNG ADULTS (21+)



## NEXTGEN OC

NextGen OC of JFFS is dedicated to building an inclusive and connected community of Jewish young adults in their 20s, 30s and 40s; promoting Jewish identity; and supporting a flourishing Jewish community, locally and globally.

NextGen OC provides volunteer, social, educational, leadership and philanthropic opportunities that are fun, filled with meaning and help young adults build community.

**NextGen Cares** is the social action/tikkun olam initiative of NextGen OC that brings together volunteers for projects that make a positive impact on the lives of others.

**Macher's Mark** brings together Jewish young adult business professionals (ages 21-45). See "Professionals" (page 25) for more.

**JewGlue** is a group exclusively for young adults ages 21-35 that provides social networking opportunities.

NextGen OC's strong commitment to young family engagement is seen in three key initiatives: **Shalom Family**, **Shalom Baby** and **PJ Library** (see page 48.)

**NextGen OC** participants also have opportunities to experience national conferences and special missions to Israel designed for them.

NextGen OC's largest signature event is **Party with a Passion**, which

MEET OTHER  
JEWS AGES  
21-45 WHO  
SHARE YOUR  
INTERESTS.

gathers over 200 young adults to celebrate the accomplishments of JFFS. NextGen OC also hosts an educational program, **The OC Event**, and an annual mid-year fundraiser **3D: Donors. Drinks. Dinner.** at which 21-45 year olds express their commitment to philanthropy for the current year. This event is sponsored by community leader Blossom Siegel and her family, who are longtime champions of young leadership development.

## CHAIR, NEXTGEN OC:

Alexandra Mars, 2016-2017

## CHAIR, SHALOM FAMILY:

Margo Marcus, 2016-2017

## STAFF CONTACT:

Stephanie Epstein

## EMAILS:

NextGen@JFFS.org

JewGlue@JFFS.org

ShalomFamily@JFFS.org

## MORE INFORMATION:

JewishOC.org/NextGen





**A DYNAMIC  
GROUP OF  
WOMEN WHO  
FUNDRAISE AND  
VOLUNTEER FOR  
OUR COMMUNITY  
AND ISRAEL.**

## WOMEN'S PHILANTHROPY

Women's Philanthropy (WP) is your link to community, lasting friendships, and the opportunity to do the extraordinary.

**Women's Voices**, the largest annual gathering of Jewish women in Orange County, is our signature campaign luncheon supporting the Generations Fund of JFFS, and is held each year in mid-March.

**Voices in the Night** is a new, exciting fall event for women.

Special events are held throughout the year for WP **premier leadership levels**: **Lion of Judah** (\$5,000+); **Shomer** (\$2,500+); **Pomegranate** (\$1,800+); **Morasha** (\$1,000+); and **Trendsetters** (\$500+).

In addition, WP also offers a number of year-round opportunities to socialize, volunteer, network and enhance and develop leadership skills. These include:

- **Cocktails & Culture**, where women meet new friends and listen to a stimulating program on Jewish cultures around the world;
- **Pacesetters**, a group of women with school-age children who plan fun activities such as wine tasting, cooking classes and painting;
- **Mitzvah Mavens & Mitzvah Maven Knitting Circle**, giving women the opportunity to do good deeds across the community together (see page 27);

- **Reading Partners**, a volunteer literacy program in OC public school K-3 classrooms, where volunteers help children learn to read, so they can read to learn (see page 27).

### PRESIDENT:

Heather Kline, 2016-2017

### STAFF CONTACT:

Eileen Garbutt

### EMAIL:

Women@JFFS.org

### MORE INFORMATION:

JewishOC.org/Women



**CAMARADERIE,  
LEADERSHIP,  
PHILANTHROPY  
AND LASTING  
BONDS WITH  
BROTHERS AND  
FRIENDS.**

## SOLOMON SOCIETY

Inspired by the wisdom and leadership of King Solomon, **Solomon Society** of JFFS is Orange County's fellowship of dynamic Jewish men – **brothers, fathers, sons and friends** – who inspire each other through Jewish values and commitment to community.

Members of Solomon Society build and support community through **networking, leadership, philanthropy** and leveraging of collective power.

Through the JFFS Generations Fund, Solomon Society helps to fund Jewish learning; assists individuals and families in need; provides emergency assistance to people in crisis; supports Israel; gives a helping

hand to seniors and others; and supports Jewish organizations and congregations across OC.

Each member of Solomon Society makes a minimum annual charitable investment of \$1,000 in his own name to the Generations Fund, as a strong statement of personal responsibility for Jews in need at home and abroad.

Solomon Society's premier campaign event – **Late Night with Solomon Society** – is a high-end evening of comedy and camaraderie held annually with top headliners and the Mensch of the Year award.

Solomon Society members also foster lasting friendships across the community over great food and conversation through **Supper Club** and **Guys' Night Out**.

Throughout the year, Solomon Society also holds special events for members, such as private briefings with top-tier speakers and entertainers, and mitzvah activities with Second Harvest, JFFS Mandel House, and Heritage Pointe.

### CO-CHAIRS:

David Stoll & Michael Stoll 2016  
Kenny Beard 2017

### STAFF CONTACT:

Doris Jacobson

### EMAIL:

[SolomonSociety@JFFS.org](mailto:SolomonSociety@JFFS.org)

### MORE INFORMATION:

[JewishOC.org/SolomonSociety](http://JewishOC.org/SolomonSociety)





**EXPAND YOUR  
PROFESSIONAL  
NETWORK &  
CREATE NEW  
BUSINESS  
OPPORTUNITIES.**

## THE NETWORK

The Network of JFFS is Orange County's Jewish networking group for executives and business leaders.

## MACHER'S MARK

Macher's Mark, an initiative of the JFFS NextGen OC department, brings together Jewish young adult business professionals (ages 21-45).

The Network and Macher's Mark provide a platform for building relationships and developing personal and meaningful connections, fostering business and leadership opportunities, and engaging

with peers who share the same commitment to Jewish values, partnership and community building. Professionals of all industries – real estate, financial services, high tech, law, medicine and others – are invited to attend.

Both The Network and Macher's Mark offer activities throughout the year including panel discussions, speaker spotlights, and social events with networking. The Network partners with Macher's Mark to provide emerging business leaders with access and exposure to high-level members of the established Orange County business community.

**THE NETWORK CO-CHAIRS:**  
Bernie Labowitz & Howard Mirowitz

**STAFF CONTACT:**  
Doris Jacobson

**EMAIL:**  
[TheNetwork@JFFS.org](mailto:TheNetwork@JFFS.org)

**MORE INFORMATION:**  
[JewishOC.org/TheNetwork](http://JewishOC.org/TheNetwork)

**MACHER'S MARK CHAIR:**  
Barry Grossman

**STAFF CONTACT:**  
Stephanie Epstein

**EMAIL:**  
[NextGen@JFFS.org](mailto:NextGen@JFFS.org)

**MORE INFORMATION:**  
[JewishOC.org/NextGen](http://JewishOC.org/NextGen)



# SENIORS



## LAGUNA WOODS REGION

The Laguna Woods Region (LWR) of JFFS includes residents of Laguna Woods Village (an independent living community for people 55 and over, with one of the largest concentrations of Jewish households in OC) and is open to all Jewish seniors in south county communities.

LWR sponsors a variety of events and activities within Laguna Woods Village, featuring outstanding speakers and entertainers, for Jewish seniors to enjoy together. JFFS Silver Streak buses provide transportation from Laguna Woods to Jewish events across the broader community (see page 38). LWR

also plays an important role in the philanthropic support of the Generations Fund of JFFS, Connect 2 Community Initiatives, and the Legacy Circle (see page 13).

Since its founding, the Laguna Woods Region of JFFS has raised millions of dollars for the community through annual and legacy gifts to JFFS which have helped to address emergencies and basic Jewish needs locally and throughout the world. LWR signature campaign events include an **Advance Gifts Event**, a **Community Reception** and a **Donor Recognition Evening**.

Outreach events throughout the year include **Honorees' Night**

**LINKING ACTIVE  
JEWISH ADULTS  
(55+) WITH  
THE BROADER  
JEWISH  
COMMUNITY.**

celebrating Jewish organization volunteers; a **summer social** with entertainment and dessert which attracts over 400 people and **neighborhood coffees** to introduce new residents to the Jewish community.

Special programs for Holocaust survivors (including Laguna Woods residents) are presented at monthly **Café Europa** events throughout the community (see page 37).

The Laguna Woods Region Board meets monthly and welcomes individuals interested in learning more about JFFS.

### **PRESIDENT:**

Harriet Schwartz, 2016-2017

### **STAFF CONTACT:**

Chelle Friedman

### **EMAIL:**

Chelle@JFFS.org

### **MORE INFORMATION:**

JewishOC.org/LagunaWoods





# VOLUNTEERING



JFFS offers many ways to get involved as a volunteer. Whether you are interested in working with children; helping the elderly live independently and with dignity; providing nourishing food to individuals and families at risk; organizing community programs or events; fundraising or supporting the community here and in Israel in countless ways, there is a volunteer opportunity waiting for you.

Join us in our mission of tikkun olam, a Hebrew phrase that means “to heal the world.”

**MORE INFORMATION:**  
JewishOC.org/Volunteer

**EMAIL:**  
Volunteer@JFFS.org

**Mitzvah Mavens (Women)** If you are a newcomer to OC, or a woman who simply seeks to do more volunteer work in our community, Mitzvah Mavens is a wonderful entry point! There is no financial commitment to get involved, you will meet and become friends with a dynamic group of women, and you’ll do fulfilling, important mitzvah projects throughout Orange County! **Contact: Women@JFFS.org**

## NextGen Cares

Join other young adults (21-45) by making a positive change in people’s lives through the mitzvah of tikkun olam. Volunteering is fun, easy, and makes a profound impact! Together we give our time to serve a variety of groups, including U.S. troops stationed overseas, adults with special needs, and people who are homeless. **Contact: NextGen@JFFS.org**

## Senior Care & Connect

JFFS Family Services needs volunteers to provide rides and escort to seniors (see Silver Streak below), assist with Café Europa events (see page 37), perform in-home tech assistance, home repair and data entry on behalf of seniors in our community, and lead fitness classes and serve as sighted guides for the vision impaired. **Contact: Volunteer@JFFS.org**

## Pro-Bono Services

Use your skills and career to help our community. Pro-bono service



volunteers are professionals in law, real estate, finance, insurance and other areas who offer their services at low or no cost to assist JFFS clients. **Contact: Volunteer@JFFS.org**

## Reading Partners

Help children learn to read! Reading Partners is a volunteer literacy program in OC public schools (K-3) sponsored by Women’s Philanthropy of JFFS. All it takes is one hour a week to make a huge difference in a child’s life. Men and women of all backgrounds and beliefs are invited to volunteer! **Learn More & Apply: JewishOC.org/RP**

## Silver Streak Transportation

Volunteer drivers give the precious gift of independence to seniors and others who can no longer drive, helping them to stay connected to the community. Volunteer to drive seniors to vital appointments, the store and social gatherings. Mileage reimbursed. Drive as often as you want in the area you want! **Contact: Volunteer@JFFS.org**



TEMPLE BAT YAHM

*Strength of Tradition, Warmth of Community*



## Find your passion here at TBY!

Senior Rabbi Gersh Zylberman,  
Rabbi Emeritus & Senior Scholar Rabbi Mark S. Miller,  
Rabbi Rayna Gevurtz and Cantor Jonathan Grant  
and the TBY community welcome you to join us in 5776 for a  
wonderful new year of services and studies, social action and  
celebration here at Temple Bat Yahm.

## Everyone is Welcome!

We are a center for Jewish life, a home away from home where you and your loved ones can share with us in the life-long Jewish journey of learning and discovery. Whatever your background, age, or stage of life, we invite you to get to know us by checking out our diverse programs, worship services and special events.

### Join our esteemed Rabbis at:

*Lunch on Wednesdays, 12:00 pm*

*Torah Study on Saturdays, 9:00 am*

*Coffee Talk on Sundays, 9:15 am*

*Worship with us at weekly Shabbat services Fridays at 6:00 pm*

### Study, Sing & Socialize with us at:

*TBY Preschool (NAEYC Accredited)*

*Jewish Center for Arts & Learning (JCAL)*

*KOBY (3rd—5th grade)*

*JOBY (6th—grade)*

*TTOBY (9th—12th grade)*

*Adult Education*

*TBY Choir*

*Women of Temple Bat Yahm*



For more information on Membership, events and activities please contact our offices at (949) 644-1999 or visit [www.tby.org](http://www.tby.org)

Temple Bat Yahm | 1011 Camelback Street | Newport Beach, CA | 92660



# SOCIAL SERVICES



Across the ages Jews everywhere have modeled their lives around the values and traditions of social responsibility, compassion and respect for all. The Jewish community in Orange County is no exception, providing extraordinary social services that support and strengthen people of all ages, beliefs and backgrounds.



# JFFS FAMILY SERVICES



Guided by Jewish traditions of social responsibility, compassion and respect for all, the **Family Services division** of Jewish Federation & Family Services provides social services to thousands of individuals, families and groups of all ages, beliefs and backgrounds across Orange County.

Our qualified, professional staff, lay leaders and volunteers work together to provide a range of exceptional, multi-disciplinary services and support to all people in need.

JFFS Family Services collaborates with over 30 community organizations to ensure that services are firmly embedded in an overall community response to meet the needs of Orange County residents, and to avoid duplication of services. JFFS Family Services ensures that you and your loved ones receive the best care and services at all times.

## COUNSELING

JFFS Family Services offers short- and long-term counseling and psychotherapy for individuals, youth, couples, families, and groups. JFFS counselors and therapists are highly trained clinicians, knowledgeable about best practices in the mental health field. They provide sliding-scale counseling sessions to help cope with:

- Depression and mood disorders
- Anxiety disorders
- Grief and loss
- Life transitions (divorce, separation, job loss, illness)
- Relationship issues
- Communication issues
- Substance abuse
- LGBTQ issues
- And more

## SUPPORT GROUPS

JFFS Family Services offers professionally-led support groups to help people cope, through a combination of peer support and professional guidance.

### Bereavement Support

JFFS office (Irvine):  
Tuesdays 2:00-3:00pm  
Laguna Woods:  
Mondays 10:00-11:30am

For individuals who have recently lost a loved one, these groups offer heartfelt support and guidance to deal with loneliness, loss and isolation, learning how to live with

grief, and moving forward. Groups meet weekly in Irvine and Laguna Woods.

### Family Caregivers Support Group

1st Wednesday each month  
JFFS office (Irvine): 12:30-2:00pm

For adults who are experiencing pressures and responsibilities for the care of an aging parent or relative. The group meets monthly.

### Women's Support Group

Contact us for dates (6-week group)

Better relationships begin with understanding yourself and patterns that no longer serve you. Learn how to have healthier boundaries, patterns and emotions in this interactive group. Open to women of all ages and backgrounds.

## COMMUNITY WORKSHOPS

Contact: 949-435-3460

Does your group have an unmet need? Are you interested in learning about current trends in mental health or wellness? Contact us regarding community workshops offered by our professional staff. We are able to tailor talks to your congregation, club, school or board in order to address any need.

Recent presentations have included: Healthy Communication and Problem Solving; Mental Illness Stigma; Teen Mental Health; Mindfulness in the



Workplace; Mindful Parenting; Abuse in the Home: Domestic Violence, Child Abuse and Elder Abuse; Emotional Wellness.

### LIFELINES

JFFS Lifelines Emergency Assistance provides individuals and families who are in distress with emergency help and short-term case management, as well as follow-up long-term solutions.

#### Helpline Hours:

Monday-Thursday: 8:30am-5:00pm

Contact our Lifelines team to learn how you can be connected to the services that meet your needs. If you have a life-threatening emergency, dial 911.

### Women Forward

JFFS offers career coaching for women over 40 trying to enter or re-enter the job market. A certified career/life coach and a financial stability coach give one-on-one guidance, helping participants gain confidence, employment and financial skills. From help with resumes and job searches, to preparing for job interviews, money management and career ladder coaching, JFFS is there with you every step of the way. This program is offered free of charge.

### Adopt a Family

Every year, JFFS collects gift cards, food and holiday gifts from individuals, congregations, schools



and others in our community, to help families and individuals in economic distress. During major holidays, JFFS matches donors and donor groups with families in need. Contact us if you need help, or if you want to help.

### SPECIAL NEEDS

Contact: Reega Neutel, MSW  
Reega@JFFS.org

### The Jeremiah Society

Enriching the lives of special needs adults through family, friends and Jewish heritage. Founded by Rose Lacher with Rabbi Robert «Jeremiah» Bergman and Rabbi Moishe Engel

to provide Jewish celebration and social interaction, and now operated by Jewish Federation & Family Services. Monthly programs include music, dance, arts & crafts, religious discussion, problem solving and peer support.

### Mandel House

949-435-3460

Mandel House, the first Jewish residential home for adults with special needs in Orange County, offers residents a community-based, group living environment that meets their unique needs and helps them remain active in Jewish life, participate in cultural events and celebrate Jewish holidays. Special attention is paid to assisting residents with activities of daily living, socialization, and good nutrition.

### Horwitz Family House

A second Jewish residential home for adults with special needs - coming in 2017.

### FAMILY SERVICES HELPLINE:

949-435-3460

#### EMAIL:

Info@JFFS.org

### MORE INFORMATION:

JewishOC.org/FamilyServices

# SPECIAL NEEDS: MORE



## Brit Tikvah

Congregation Shir Ha-Ma'alot  
949-857-2226

A support group for parents of children with special needs. Meetings held monthly. Published comprehensive resource guide to professionals, specialists and recreational opportunities for children with special needs. See page 84 for full mailing address.

## The Friendship Circle

FriendshipCircleOC.org  
2240 University Drive,  
Newport Beach, 92660  
949-721-9800  
info@FriendshipCircleOC.org

Provides children and teens with special needs a full range of social and recreational experiences including summer and winter camp, holiday programs, sports and art activities and more. Professional therapists train teen volunteers to become effective and therapeutically skilled in developing bonds with the children.

## Grandparent Autism Network

ganinfo.org

## Family Autism Network

faninfo.org

360 E. First Street, #202  
Tustin, 92780  
714-573-1500

Grandparent Autism Network (GAN) is an international organization that informs grandparents about autism and supports them in becoming resources for one another.

Family Autism Network (FAN) is a volunteer program under the auspices of GAN. The FAN website provides an OC Calendar of Autism Events, access to hundreds of local and national autism resources, and opportunities for volunteer service.

## Special Needs Network

Temple Beth Sholom  
714-628-4600

Social events, support groups and awareness-raising by and for families of children with special needs. See page 85 for full mailing address.

## ADDITIONAL SOCIAL SERVICE RESOURCES

### Bet Tzedek Legal Services

bettzedek.org  
323-939-0506

### Jewish Free Loan Association

jfla.org  
323-761-8830  
info@jfla.org

### Sharsheret

sharsheret.org  
866-474-2774  
info@sharsheret.org

### Jewish Addiction Awareness Network

jaanetwork.org  
949-424-5226  
marla@JAANetwork.org

### Beit T'Shuva

beittshuvah.org  
310-204-5200



Temple Judea  
gives families  
more reasons to

# be joyful

Create more  
joy with us.

949.830.0470

[templejudealw.org](http://templejudealw.org)

24512 Moulton Pkwy.  
(1 block south of El Toro Rd)



## Temple Judea offers FREE Hebrew School to absolutely anyone!

Parents, kids, grandparents and friends — we encourage *everyone* to learn together. **Join us** and make friends in the Jewish community you and your growing family is looking for.



Temple Judea

A synagogue for  
your generation.

**CASH**

**FOR YOUR  
LIFE INSURANCE POLICY!**

Your life insurance policy may be *much more valuable* than you ever thought possible through a Life Settlement.



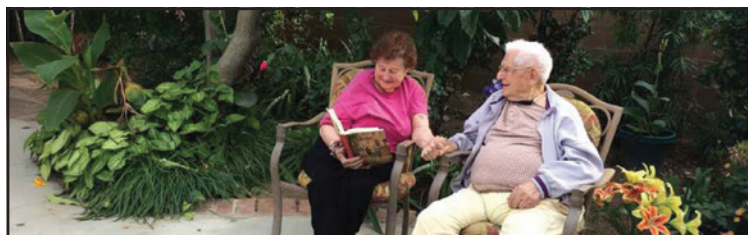
Do you have a  
life insurance  
policy that you  
no longer want  
or need?

A Life Settlement is the sale of an existing life insurance policy for an amount that exceeds its cash surrender value. Life Settlements provide an opportunity to get the maximum value for your life insurance policy *during your life!*

**Call today for a  
FREE evaluation!**

**Allan Silverman  
949.975.0833**

CA Lic. #0379802



*Bubbe & Zayde's Place, Inc.*

OF TUSTIN

*"Quality Living for Seniors"*

*"Finding Bubbe & Zayde's Place for my mom was the best thing I ever did!" - Steve Magid, Laguna Woods Village*

*"The Gold Standard!" - Dr. Alan & Paula Kanter*

Shimon Cagan (310) 415-2959  
Bonnie Curkin (714) 928-5030

[Bubbeandzaydesplace.com](http://Bubbeandzaydesplace.com)

Lic #306003949, 306001252, 306001360, 306001844, 306004445

Heritage Pointe is the only Jewish retirement home in Orange County, California.

## One Bedroom Apartments Currently Available!



*Heritage Pointe is a non-profit 200-resident community in Mission Viejo, **providing independent, assisted living and memory care services** for our seniors while incorporating Jewish traditions and lifestyles.*

### Amenities

Heritage Pointe offers 24 hour staff coverage, convenient transportation, weekly housekeeping, health and wellness programs and delicious kosher cuisine in our beautiful dining room.

### Other amenities include:

- Synagogue
- Cafe & Gift Shop
- Wellness Center
- Art Studio
- Library
- Music Room
- Pool & Spa
- Beauty Salon



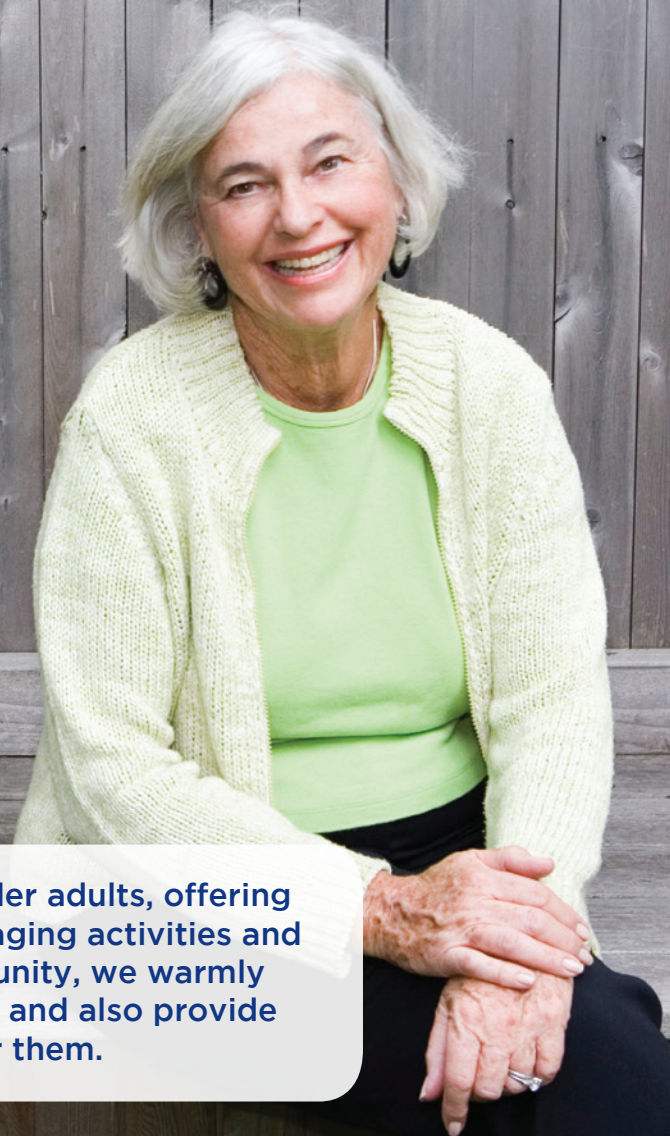
  
**HERITAGE POINTE**  
Seniors Living in the Jewish Tradition

Call Heritage Pointe at **949-364-9685** to schedule a tour or visit our website at **heritagepointe.org** for more information.

Like us on  Facebook



# SENIOR SERVICES



Orange County is a great place for older adults, offering many services, support systems, engaging activities and meaningful opportunities. As a community, we warmly embrace every older adult and senior, and also provide support for family members caring for them.





# JFFS SENIOR CARE & CONNECT



Jewish Federation & Family Services embraces every senior as a family member. For many older adults, issues of health, mobility, finances and social connection can be difficult to manage. For seniors living alone, the challenges can be overwhelming.

We help seniors to live healthy, independent lives; maintain social relationships; and stay connected to Jewish community and culture.

JFFS provides a comprehensive array of services for older adults that address practical, emotional, physical and spiritual needs. We work with seniors and their family members in the home, in our Irvine office, in residential living communities and more.

## SENIOR HELPLINE: 949-435-3460

Monday-Thursday 8:30am-5:00pm  
Friday 8:30am-3:30pm

The JFFS Helpline is open during business hours. The Helpline connects seniors and family members with information, referrals, consultation and troubleshooting on issues impacting changing needs of older adults. If you have a life-threatening emergency, dial 911.

## CARE MANAGEMENT & CONSULTATION

Expert guidance for seniors and their family members who are experiencing challenges related to aging.

## SUPPORT GROUPS

Professionally-led support groups designed to help older adults and their families cope with the emotional, physical and relational changes brought about by aging.

### Bereavement Support

JFFS Office (Irvine):  
Tuesday 2:00-3:00pm  
Laguna Woods:  
Monday 10:00-11:30am

To process grief, share experiences, and find new balance and meaning in living. Groups meet weekly.



## Support Group for Family Caregivers

1st Wednesday each month  
JFFS Office (Irvine): 12:30-2:00pm

For adults experiencing the pressures of caring for an aging family member.

## COUNSELING

JFFS counselors and therapists are highly trained experts who can provide assistance to people of all ages and faiths. Sliding-scale counseling sessions help older adults address issues of anxiety, depression, bereavement and other life challenges. They also work with family members coping with caring for elderly loved ones.

## HOLOCAUST SURVIVOR SERVICES

JFFS is committed to helping Holocaust survivors in Orange County and their families achieve



# JFFS SENIOR CARE & CONNECT

and maintain the best possible quality of life. Services include:

## **In-Home Care Assistance**

Financial assistance for personal care, home health, companion care, chore assistance, transportation or housekeeping.

## **Case Management**

Consultation and assistance, short- or long-term, on any issue affecting health and well-being.

## **Restitution/Claim Forms Assistance**

The process of filing claims can be extremely complex. We can help walk you through it.

## **Emergency Financial Assistance**

Low-income survivors are eligible for assistance with medical/dental care, short-term nursing care and other one-time expenses.

## **Café Europa OC**

A series of monthly gatherings coordinated by JFFS where Holocaust survivors relax with friends, listen to music, sing, dance, enjoy refreshments and hear stimulating lectures on important Jewish topics. Contact us to be added to the mailing list for Café Europa events.



## **JFFS SENIOR SERVICES: MORE Silver Streak Transportation**

JFFS Silver Streak helps older adults, 60+, who cannot drive. We also serve individuals under 60 with temporary and permanent disabilities, adults with developmental disabilities, vision impaired adults, patients of Hoag Newport Beach Cancer Center, individuals at risk of homelessness, and victims of domestic abuse. Rides are provided by professional and volunteer drivers to any Orange County city. Group trips and shuttles are available by special arrangement. Riders must be pre-screened to determine if they are qualified for the program. All rides require at least one week advance notice.

## **Irvine Supportive Community**

The Irvine Supportive Community (ISC) is a system of care, support and engagement that helps seniors to enjoy vibrant, healthy, independent lives in their own homes and neighborhoods. ISC is a partnership of JFFS with the City of Irvine, Jamboree Housing, Innovative Housing Opportunities, Silverado Care, and local healthcare, educational and business partners. Program volunteers provide services that help seniors take care of daily needs, connect to services, and maintain social connections.

**FAMILY SERVICES HELPLINE:**  
949-435-3460

**MORE INFORMATION:**  
Info@JFFS.org  
JewishOC.org/FamilyServices

# SENIOR RESOURCES: MORE



## **Bubbe & Zayde's Place**

bubbeandzaydesplace.com  
1534 East 21st St., Santa Ana 92705  
Telephone: 714-928-5030

Kosher residence facility serving north and central OC, combining Jewish culture and tradition with senior services in a family setting.

## **Heritage Pointe**

heritagepointe.org  
27356 Bellogente, Mission Viejo 92691  
Telephone: 949-364-9685

OC's only Jewish senior living community, offering independent, assisted living and memory care communities. Its strictly kosher kitchen serves three meals daily. Heritage Pointe offers traditional Judaic programs and worship in its Congregation K'hilat Horim; as well as entertainment, outings, a staffed wellness center, and classes in art, brain fitness and computers. Heritage Pointe at Home can assist you with non-medical companion care. Community volunteers are welcome.

## **US Bridges**

Contact:  
USBridges@universitysynagogue.org  
3400 Michelson Dr., Irvine 92612

US Bridges is an adult day program at University Synagogue for individuals of all backgrounds with mild to moderate memory loss and cognitive decline. US Bridges provides participants with opportunities to connect with their memories while creating new friendships and experiences in an organized, supportive environment.





# Celebrating is Our Specialty

B'nai Mitzvahs • Weddings • Rehearsal Dinners  
Corporate Events & Meetings • Tradeshows • Reunions  
Anniversaries • Birthday Celebrations  
Fundraisers • Charity Events

Event Department: 949.387.8750  
jennifer@andreisrestaurant.com

2607 Main Street • Irvine, CA 92614 • 949.387.8887  
www.andreisrestaurant.com



Andreis's  
CONSCIOUS CUISINE & COCKTAILS





# The academics they need. The values you cherish.



TVT prepares students for life and academic success with an individualized college preparatory environment where the rich traditions of Jewish studies are integral to the curriculum. Graduates from TVT, our top-ranked TK–12 private school in Orange County\*, are accepted to the best universities at up to three times national rates. We invite you to learn how we help our students succeed and develop a deep appreciation of their heritage.

\*Source: 2016 Niche Rankings



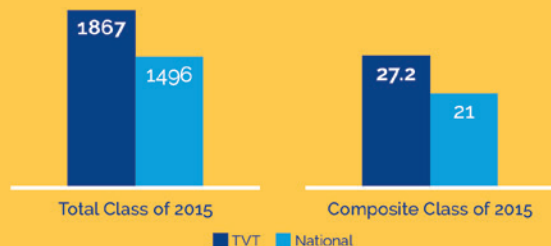
## UNIVERSITY ACCEPTANCE

|              | TVT | Nat'l Avg. |
|--------------|-----|------------|
| Cornell      | 44% | 14.2%      |
| Northwestern | 36% | 13.1%      |
| Stanford     | 18% | 5.1%       |
| UC Berkeley  | 41% | 16%        |
| UCLA         | 32% | 18.6%      |
| USC          | 57% | 18%        |

TVT acceptance rate 2006 – 2015

## SAT SCORES

## ACT SCORES



National  
Merit Scholars

5

## VISIT US

Come see what makes TVT such a unique and inspiring community. To schedule a tour, please contact our Admissions Office: 949.509.9500.

### TK-12 ADMISSIONS OPEN HOUSE

Thursday, November 17, 2016, 9:30 am

Thursday, January 19, 2017, 9:30 am

Thursday, May 11, 2017, 9:30 am



Founded in Loving Memory of Naomi Gelman Weiss

Love Learning. Live Values. Discover Heritage.

Tarbut V'Torah Community Day School  
5 Federation Way, Irvine, CA 92603 | [TARBUT.com](http://TARBUT.com)



# JEWISH LEARNING & LEADERSHIP



Jewish traditions and teachings form an important part of any Jewish community. Together, as a community in Orange County, we foster ongoing and lasting ties to our Jewish roots and work to ensure our members have the tools to lead our community forward through the ages. From day, religious and Hebrew schools to Jewish camps, programs for teens, on-campus opportunities for college students and adult leadership skills, our community has something for everyone.





# JFFS PASSPORT TO JEWISH LIFE®



## PASSPORT TO JEWISH LIFE®

Jewish learning experiences during youth increase our children's chances of choosing Jewish lives as adults. JFFS Passport to Jewish Life® educational grants make these experiences possible. Like passports used by travelers, Passport to Jewish Life® grants open the doors to exciting Jewish destinations – such as Jewish camping, Maccabi experiences, religious school, teen leadership programs, Israel trips and

more – for youth and young adults, 4th grade through age 22.

Passports are granted on the basis of merit, need or both. The application process is open to students whose families reside full-time in Orange County. If a family resides in a community outside the geographic borders of Orange County, but the family is affiliated with an OC congregation, the child is also eligible to apply for a Passport.

Note: Passport grants are not available for Jewish day school tuition - please contact the schools directly about tuition assistance.

### APPLICATION & GUIDELINES:

[JewishOC.org/Passport](http://JewishOC.org/Passport)

### FOR MORE INFORMATION:

[Passport@JFFS.org](mailto:Passport@JFFS.org)



# KIDS & TEENS



Jewish learning experiences during childhood both enrich lives and help foster lasting connections to roots and heritage.

The Jewish community in Orange County has a rich array of Jewish learning opportunities for children and teens – from full-time day schools to weekend classes, summer camps, peer group social activities and more!

Be sure to read more about the Passport to Jewish Life® educational grants available from JFFS (previous page).

Contact the organizations listed here directly for more information about programs and activities.

## JEWISH DAY SCHOOLS

Orange County is home to three Jewish day schools. They are:



### The Hebrew Academy

hacds.org  
14401 Willow Lane, Huntington Beach 92647  
714-898-0051  
admin@hacds.org

The Hebrew Academy, founded in 1969, is Orange County's longest established Jewish day school, educating children from early childhood through high school on an 11-acre campus in Huntington Beach conveniently located near the 405 Freeway. It is the only school in southern California to have received two Presidential Blue Ribbons for Academic Excellence in early childhood education. Students come from the greater Long Beach and Orange County area, and bus transportation

is available. With small classes and high teacher-student ratio, the Hebrew Academy provides individualized instruction in a curriculum that blends Judaic studies with a rigorous academic program with emphasis on STEAM, enrichment programs and advanced placement for all children.

Its dual curriculum program is founded in Project Based and Blended Learning, holding students to high expectations while giving them the support they need to meet requirements. The curriculum offers opportunities for every student and teacher to participate joyfully in learning and scholarly work. Its proud legacy is its graduates who attend top universities and become successful professionals involved in Jewish life.

### Tarbut V'Torah Community Day School

tarbut.com  
K-5: 5200 Bonita Canyon, Irvine 92603  
6-12: Samuelli Jewish Campus, Irvine  
5 Federation Way 92603  
949-509-9500

The #1 Ranked Jewish School for Best Academics in the Nation, according to Niche.com, Tarbut V'Torah's dual curriculum provides an individualized college preparatory environment rooted in

# KIDS & TEENS



Jewish values. TVT teaches children to think creatively, challenges them to achieve their fullest potential, and prepares them to be leaders, while strengthening their sense of Jewish identity and community and equipping them to lead a joyous and meaningful Jewish life.

TVT students work to their highest level of achievement – academically, spiritually, morally and athletically – under the guidance of talented educators in interactive classrooms that serve as centers of discussion. TVT was founded in 1991 by Irving Gelman, a Holocaust survivor, in loving memory of Naomi Gelman Weiss.

## Irvine Hebrew Day School

irvinehebrewday.org  
2625 N. Tustin Ave.  
Santa Ana, CA 92705  
949-478-6818  
info@irvinehebrewday.org

Irvine Hebrew Day School (IHDS) offers a full-day elementary school program. Its interdisciplinary General Studies, Hebrew and Jewish Studies program instills a love of learning, a deep connection with our heritage and community, conveys pride in our traditions and texts, and imparts the tools necessary for every child to reach their full potential and become the leaders of future generations. IHDS also offers art, yoga, PE, music, theater and STEAM as enrichment.

The mission of Irvine Hebrew Day School is to cultivate active and creative minds, foster a community of joyful learning, create compassionate and respectful citizens and nurture a thoughtful, spiritual and personal relationship with Jewish life, Torah learning and the state of Israel.

## JEWISH PRESCHOOLS & EARLY CHILDHOOD PROGRAMS

Please visit the websites indicated for current information on hours, curriculum and ages of children served.

### Aliso Viejo

#### Temple Beth El of South Orange County

Early Childhood Center  
tbesoc.org/childhoodcenter.htm

### Fullerton

#### Temple Beth Tikvah

Early Childhood Learning Center  
ecclctbt.org

### Huntington Beach

#### Hebrew Academy

Preschool  
hacds.org

### Irvine

#### Beth Jacob Congregation

Olam Jewish Montessori Preschool  
bethjacobirvine.org

#### Chabad of Irvine

Chai Tots Bubba's Preschool  
chabadirvine.org

#### Congregation Shir Ha-Ma'alot

Torah Time for Tots and Pre-K  
shmtemple.org

#### Sheila & Eric Samson Family Early Childhood Learning Center

Merage Jewish Community Center  
jccoc.org

#### Aronoff Preschool

Merage Jewish Community Center  
jccoc.org



# KIDS & TEENS

## University Synagogue

Preschool  
universitysynagogue.org

## Laguna Beach

### Chabad of Laguna Beach

Chabad Community Preschool  
chabadoflaguna.com

## Laguna Niguel

### Chabad of Laguna Niguel

Bagel Babies  
chabadlagunaniguel.com

## Newport Beach

### Temple Bat Yahm

Early Childhood Education  
tby.org

## Rancho Santa Margarita

### Chabad of Rancho S. Margarita

Mommy & Me Classes  
jewishrsm.com

## San Clemente

### Chabad of S. Clemente

Mommy & Me Classes  
jewishsc.com

## Santa Ana

### Temple Beth Sholom

Early Childhood Center  
tbsoc.com/preschool

## Tustin

### Chabad of Tustin

Mommy & Me Classes  
chabadtustin.com

## Congregation B'nai Israel

Child Development Center  
cbi18.org

## Westminster

### Temple Beth David

Early Childhood Learning Center  
templebethdavid.org

## Yorba Linda

### Congregation Beth Meir HaCohen/Chabad

Aleph Preschool  
ocjewish.com/aleph

## HEBREW & RELIGIOUS SUPPLEMENTARY SCHOOLS

For specifics on class schedules and other youth activities, contact the congregations directly.

For information about religious services, visit the Congregations & Rabbis pages in the Jewish Living section.

## Aliso Viejo

### Temple Beth El of South Orange County

Religious School (K-12)  
tbesoc.org/school.htm

## Fountain Valley

### Congregation B'nai Tzedek

Religious School (K-12)  
cbtfv.org

## Fullerton

### Temple Beth Tikvah

Religious School (K-12)  
tbtoc.org

## Huntington Beach

### Chabad of W. Orange County

Hebrew School (ages 5-13)  
chabadhb.com

## Los Alamitos/Cypress

### Chabad of Los Alamitos & Cypress

Hebrew High  
ChabadLosAl.com

## Irvine

### Beth Jacob Congregation of Irvine

Hebrew School (K-6)  
bethjacobirvine.org

## Chabad of Irvine

Hebrew School (K-8)  
chabadirvine.org

## Congregation Shir Ha-Ma'alot

Religious School (K-12)  
shmtemple.org

## University Synagogue

Religious School  
universitysynagogue.org

## Young Israel of Orange County

Open Yeshiva  
yioc.org

## Laguna Beach

### Chabad of Laguna Beach

Hebrew School (ages 5-13)  
chabadoflaguna.com

## Laguna Niguel

### Chabad of Laguna Niguel

Hebrew School  
ChabadLagunaNiguel.com

## Laguna Hills

### Temple Judea

Religious School (K-8)  
templejudealw.org

## La Mirada

### Temple Beth Ohr

Hebrew & Religious School (K-10)  
templebethohr.com

## Mission Viejo

### Chabad of Mission Viejo

Hebrew School  
chabadofmv.com

## Newport Beach

### Chabad Center for Jewish Life

Hebrew School  
jewishnewport.com

# KIDS & TEENS

## **Surf City Synagogue/ Temple Isaiah**

Torah U'Masoret Religious School  
surfcitysynagogue.org/education

## **Temple Bat Yahm**

Religious School (K-12)  
tby.org

## **Rancho Santa Margarita Chabad of Rancho S. Margarita**

Hebrew School (K-7)  
jewishrsm.com

## **San Clemente Chabad of S. Clemente**

Hebrew School  
jewishsc.com

## **Santa Ana Temple Beth Sholom**

Religious School (K-12) &  
Hebrew School (3-6)  
tbsoc.com

## **Tustin Chabad of Tustin**

Hebrew School & Hebrew High  
jewishtustin.com

## **Congregation B'nai Israel**

Religious School (K-7) &  
Hebrew High (8-12)  
cbi18.org

## **Westminster Temple Beth David**

Religious School (K-12)  
templebethdavid.org

## **Yorba Linda Congregation Beth Meir HaCohen/ Chabad**

Hebrew School & Hebrew High  
ocjewish.com

## **JEWISH CAMPING**

Jewish camping is a transformative experience that creates life-long friendships, memories, and bonds to the Jewish community. Here are a few options in and around OC. Find more online or ask each congregation (pages 80-85).

## **Overnight Camps Camp Alonim**

alonim.com

## **Habonim Dror Camp Gilboa**

campgilboa.org

## **Camp Hess-Kramer/Camp Gindling-Hilltop**

wbtccamps.org

## **Camp JCA Shalom**

campjcashalom.com

## **Camp Mountain Chai**

campmountainchai.com

## **URJ Camp Newman**

campnewman.org

## **Camp Ramah**

ramah.org

## **Jewish Day Camps**

### **Camp B'nai Ruach**

Congregation B'nai Israel  
cbi18.org

### **ECC Summer Camp**

Temple Beth El of South OC  
tbesoc.org

### **Preschool Summer Camp**

University Synagogue  
universitiesynagogue.org

## **Camp Shamayim**

Olam Jewish Montessori  
olamjewishmontessori.com

## **Camp Sholom**

Temple Beth Sholom  
tbsoc.com

## **Camp Silver Gan Israel**

The Hebrew Academy  
campsgi.com

## **Torah Tots Kiddie Camp**

Chabad of Laguna Beach  
chabadoflaguna.com

## **Camp Yahm Yahm**

Temple Bat Yahm  
tby.org

## **Camp Yeladim & Camp Haverim**

Merage JCC  
jccoc.org

## **YOUTH PROGRAMS**

### **Merage Jewish Community Center**

jccoc.org  
1 Federation Way, Suite 200,  
Irvine 92603  
949-435-3400

Here at the Merage JCC your child will be with friends both old and new. Whether it's after school care through our Club J program, a Kids Night Out, or one of our many sports programs, qualified instructors keep children moving and engaged. Your child will have many opportunities to identify their individual gifts and talents and build confidence, all in a safe, nurturing environment filled with Jewish tradition and values, and a ton of fun!



# KIDS & TEENS

## JCC Center for Jewish Life

Contact: Mark Lazar  
markl@jccoc.org

Launched in the fall of 2016, the JCC Center for Jewish Life takes Jewish education in Orange County to the next level for all audiences. The initiative includes a robust professional development curriculum for teachers and staff at all 14 preschools and religious and Hebrew schools in Orange County. Just as the Center aims to fortify teachers, it provides Jewish education for families and youth through a menu of learning experiences, including Young Philanthropists, a giving circle for teens; Interfaith Connections providing interfaith couples with information and resources; an Israel Desk, building our community's connections to Israel; and hosting outstanding speakers and seminars on various aspects of Israeli life, arts, and culture.

## JCC Family Tree

Contact: Nicole Andronesco  
nicolea@jccoc.org

Family Tree brings teens from Orange County, Israel and Mexico City together for an amazing week of fun, Jewish culture and friends. Teens spend six months studying their families' and communities' Jewish history. They then make annual visits to each of the communities (Israel hosts summer of 2017) to share their research and gain a deeper understanding of Jewish history. Open to OC Jewish students ages 14-17, the program ties teens to peers globally and helps develop them

as Jewish advocates and leaders, strengthening Jewish peoplehood.

## JCC Maccabi Experience

Contact: Samantha Cohen  
samc@jccoc.org

The Merage Jewish Community Center's flagship youth program is the JCC Maccabi Experience. Every summer, hundreds of Orange County teens join thousands of fellow Jews from around the world for the Maccabi Games, a week-long Olympic-style sports competition and Maccabi ArtsFest, an arts extravaganza for young Jewish artists.

## JCC JStage Youth Theatre

Contact: Nicole Rosenson  
nicoler@jccoc.org

JStage introduces young people, ages 7-17, to the wonders of performing arts. As a teaching theatre, JStage is devoted to producing quality shows by children and teens, for audiences of all ages. Its professional staff works to each child's strength to create a positive atmosphere which bolsters self-esteem, team work, and a love for the theater. The season consists of fall and spring performances.

## CTeen (Chabad Teen Network)

Various locations in Orange County (see Congregations & Rabbis section on pages 80-85)

CTeen is a teen educational, humanitarian and social program designed to transform the teen years into a time of purpose and

self-discovery. CTeen harnesses the potential of teenagers with programs that encourage personal growth and inspire compassion and community service.

## Chapman University Annual Holocaust Art and Writing Contest

chapman.edu

The Rodgers Center for Holocaust Education at Chapman sponsors this annual contest for middle and high school students, from public and private schools. The contest provides them with the opportunity to share their creative works (art, film, prose, poetry) in response to survivors' oral testimonies.

## REGIONAL YOUTH RESOURCES

**B'nai B'rith Youth Organization (BBYO)**  
bbyo.org/azabbg

**National Conference of Synagogue Youth (NCSY)**  
ncsy.org or your local Orthodox congregation

**North American Federation of Temple Youth (NFTY)**  
nfty.org or your local Reform congregation

**United Synagogue Youth (USY)**  
usy.org or your local Conservative congregation

**Zimmer Children's Museum (LA)**  
zimmermuseum.org



## **A GIFT FOR JEWISH CHILDREN AND THEIR FAMILIES**

PJ Library® supports families by sending Jewish-content books and music, each month, to children ages six months through eight years. Families sharing Jewish values and culture with their children are eligible.

**SIGN UP TODAY!**  
**VISIT [PJLIBRARY.ORG](https://pjlibrary.org)**

For more information, contact Erica Evans, NextGen OC Outreach & Engagement Coordinator:  
949.435.3484 or [Erica@JFFS.org](mailto:Erica@JFFS.org)

PJ Library® is made possible by Jewish Federation & Family Services, the Jewish Foundation of Orange County, the Harold Grinspoon Foundation, and support from local philanthropists.



# COLLEGE STUDENTS



Hundreds of Jewish students attend Orange County's top-level universities and community colleges. Access to Jewish life, rich resources, and community while away from home during these transformative years helps students build and maintain a lifelong commitment to Jewish life, learning and Israel. The support and opportunities for college students provided by JFFS, Hillel and others develop the next generation of Jewish leaders.

## Hillel Foundation of Orange County

OCHillel.org  
 Lisa Armony, Executive Director  
 Lisa@JFFS.org  
 1 Federation Way, Suite 210  
 Irvine 92603  
 949-435-3484, ext. 376

Hillel Foundation of Orange County is a vibrant organization dedicated to enriching the lives of Jewish undergraduate and graduate students so that they may enrich the Jewish people and the world. OC Hillel offers a home away from home for Orange County undergraduate and graduate college students, providing a wide variety of programs including Shabbat services and kosher dinners, in-home-Shabbats, holiday celebrations, Birthright Israel trips, leadership opportunities, and educational, religious, social and community service programs. A pluralistic organization, Hillel strives to meet every Jewish student where they are, regardless of background or affiliation, and to guide them as they seek, discover and pursue the next stage of their Jewish journey.

## University of California, Irvine

### Alpha Epsilon Pi Fraternity (AEPi) aepiuci.com

The Zeta Tau Chapter of the global Jewish fraternity founded in 1913; active at UCI since 1988.

### Alpha Epsilon Phi Sorority (AEPi) facebook.com/ ucirvinealphaepsilonphi

UC Irvine's only Jewish sorority, the Beta Kappa Chapter of the national sorority founded in 1909; active at UCI since 2008.

### Chabad at UCI jewishuci.net 12 Oxford, Irvine 92612 949-280-8998 info@JewishUCI.com

Chabad at UCI seeks to be a home away from home for Jewish students on campus and offers a wealth of social, educational and spiritual programs. Dedicated to the holistic wellbeing of each student, Rabbi Zevi and Miriam Tenenbaum offer students emotional security, moral comfort, spiritual growth and personal guidance to help students graduate as stronger and more empowered Jewish than when they began their university studies.

### Hillel at UCI OCHillel.org/uc-irvine Shelby Jirikils, Director of Programs Shelby@OCHillel.org 949-435-3484, ext. 376

Representing the largest Jewish student group on the UCI campus, Hillel provides students with meaningful and appealing ways to explore and express their Jewish

# COLLEGE STUDENTS

identity, including community service, social events, informal Jewish and Israel education, and artistic expression.

## **Jewish Studies Program** **[humanities.uci.edu/jewishstudies/](http://humanities.uci.edu/jewishstudies/)**

Jewish Studies at UCI is an interdisciplinary program that allows students of all backgrounds to learn about Jewish history, the Jewish religious tradition, Jewish literature, and Israel. The program also organizes public events that bring distinguished scholars, artists, and intellectuals to Orange County.

## **Jews in Medicine (JIM)** **[jewishuci.net](http://jewishuci.net)**

Weekly lunch and learns at UCI Medical Center led by Rabbi Zevi Tenenbaum of Chabad at UCI.

## **Jewish Law Association** **[law.uci.edu/campus-life/student-organizations/orgs/jla.html](http://law.uci.edu/campus-life/student-organizations/orgs/jla.html)** Madeleine Sharp, [mgsharp@uci.edu](mailto:mgsharp@uci.edu)

Dedicated to facilitating meaningful connections between Jewish law students; organizing events for the membership and the law school community; fostering outreach with the Orange County Jewish legal community; exploring the unique legal and cultural aspects of Judaism; and providing opportunities for tikkun olam (social action).

**The Rose Project** of JFFS was established in 2008 to support and advance the Jewish experience on university campuses in Orange County; to empower Jewish student leaders to be knowledgeable and self-sufficient; to educate and train students about the facts and myths of Israel; and to foster open communication with the broader OC community.

The Rose Project engages students and community members in positive advocacy through respectful dialogue and provides significant philanthropic support to a wide range of endeavors on our college and university campuses.

The Rose Project coordinates the Jewish Campus Leadership Initiative (JCLI). JCLI is designed to create a continuous pipeline of Jewish student leaders at OC universities who make significant contributions to their campus communities and work to maintain a civil climate for Israel. Through seminars, workshops and retreats with local and international thought leaders and experts, students expand their knowledge of Israeli history, politics and culture and gain leadership, advocacy and relationship building skills.

Since its establishment, the Rose Project has invested close to \$1 million in campus and community programs. See page 11 for grants and subsidies available via the Rose Project.



**CO-CHAIRS:** Jeffrey Margolis,  
James Weiss, MD

**STAFF CONTACT:** Lisa Armony

**EMAIL:** [Rose@JFFS.org](mailto:Rose@JFFS.org)

**MORE INFORMATION:** [JewishOC.org/Rose](http://JewishOC.org/Rose)



# COLLEGE STUDENTS

## **Students Supporting Israel at UCI (SSI)** **facebook.com/SSIUCI**

Pro-Israel organization on campus, celebrating the culture, diversity, and achievements of Israel; promoting peace and understanding through education and dialogue.

## **Chapman University**

### **Alpha Epsilon Pi** **facebook.com/AEPiChapman/info**

The Alpha Omega colony of AEPi has been active at Chapman since December 2011.

### **Chabad at Chapman** **jewishchapman.com** Rabbi Shuey Eliezrie 714-508-2150 rabbi@jewishtustin.com

Shabbat dinners and educational programs.

### **Hillel at Chapman** **OCHillel.org/chapman-university** Rachel Opatowsky Director of Programs rachel@OCHillel.org 949-435-3484, ext. 376

Creating an energetic Jewish presence on campus, in partnership with the Fish Interfaith Center at Chapman: Shabbat dinners, holiday celebrations, leadership training, Jewish and Israel programming, community service and social events.

## **Jewish Law Students Association**

A peer forum for discussion of issues, education, leadership training and social connections.

### **Panthers for Israel** **facebook.com/chapmanPFI**

Chapman's Israeli culture and Israel advocacy organization.

### **Rodgers Center for Holocaust Education** **chapman.edu/holocausteducation**

The Rodgers Center at Chapman University is one of only a few centers in the US located in and supported by a private university and is distinguished among both private and public universities by its fusion of curricular, co-curricular and community programs.

### **Sala and Aron Samuelli Holocaust Memorial Library** **chapman.edu/holocausteducation**

Located within the Leatherby Libraries at Chapman University, the Sala and Aron Samuelli Holocaust Memorial Library's non-circulating collection includes photographs, documents, oral histories and books, as well as reference works to support research on the Holocaust in its historical context.

### **Sigma Alpha Mu Fraternity (The "Sammies")** **chapmansammy.org**

The Epsilon Iota Chapter of the



historically Jewish fraternity founded in 1909; active at Chapman since 2006.

## **California State University, Fullerton**

### **Alpha Epsilon Pi Fraternity (AEPi)** **boundtotravel.com/chiphi**

The Chi Phi Chapter of the global Jewish fraternity founded in 1913; active at CSUF since 2008.

### **Hillel at CSU Fullerton** **OCHillel.org/fullerton** 949-435-3484, ext. 376

Shabbat dinners, social, educational, Israel and holiday programs.

### **Titans for Israel** **facebook.com/Titans4Israel/info**

CSUF's pro-Israel student organization.

# ADULTS



Jewish Orange County has a wealth of programming for adults! Our community congregations and organizations (see pages 80-85) have far more programs than we could possibly list on these pages. Browse our Jewish community's websites to explore the depth and breadth of programming for adults, as well as family engagement opportunities.

## Merage Jewish Community Center

[jccoc.org](http://jccoc.org)

1 Federation Way, Suite 200  
Irvine 92603  
949-435-3400

The Merage Jewish Community Center offers programs that celebrate family, foster health and well-being, embrace tradition, create friendships, and expand cultural horizons, all in a safe, positive, friendly and inviting environment. The mission of the Merage JCC is to enrich our Jewish identities and create a vibrant community through excellent

programs and services rooted in shared values and traditions.

At the Merage JCC, in addition to outstanding fitness and sports facilities, Jewish theatre productions and a myriad of Jewish classes, activities, discussion groups and both men's and women's groups, you will also find Orange County's largest Jewish preschool, after-school programs and summer camps for your children and grandchildren. See additional info under Kids & Teens on pages 43-48.

## JCC Cares

Contact: Heather Zucker  
[heatherz@jccoc.org](mailto:heatherz@jccoc.org)

By providing volunteer activities for the entire Jewish community, JCC Cares brings Jewish OC together to perform Tikkun Olam (repairing the world) and Gemilut Hasadim (acts of loving kindness). Monthly events are designed for young and old to participate in, including volunteer opportunities designed specifically for teens and families. Hundreds of volunteers attend the annual Mitzvah Day in the fall and Christmas Day volunteering.

## JCC Center for Jewish Life

Contact: Mark Lazar  
[markl@jccoc.org](mailto:markl@jccoc.org)

Launched in the fall of 2016, the JCC Center for Jewish Life takes Jewish education in Orange County to the next level for all audiences. The initiative includes a robust professional development curriculum

for teachers and staff at all 14 preschools and religious and Hebrew schools in Orange County. Just as the Center aims to fortify teachers, it provides Jewish education for families and youth through a menu of learning experiences, including Young Philanthropists, a giving circle for teens; Interfaith Connections providing interfaith couples with information and resources; an Israel Desk, building our community's connections to Israel; and hosting outstanding speakers and seminars on various aspects of Israeli life, arts, and culture.

## OC Jewish Arts Festival

Contact: Aliza Sable  
[alizas@jccoc.org](mailto:alizas@jccoc.org)

Hosted over three weeks every fall at the Merage JCC, the OC Jewish Arts Festival celebrates the many facets of Jewish history and culture through music, film, books and dance. The Festival includes musical performances by artists like Matisyahu and Rita Rudner, authors and leaders such as Ari Shavit and American diplomat Dennis Ross, and award-winning movies, as well as a Festival bookstore with the largest selection of Jewish books in Orange County. Thousands attend each year, and the Festival is considered the largest Jewish event in Orange County and a cornerstone of the diverse community.

## Chapman University Department of Holocaust Education

[chapman.edu/holocausteducation](http://chapman.edu/holocausteducation)  
714-628-7377



# ADULTS

The Rodgers Center for Holocaust Education presents lectures and the annual Evening of Holocaust Remembrance. The Sala and Aron Samueli Holocaust Memorial Library features permanent and rotating exhibits.

## Orange County Jewish Community Scholar Program (CSP)

occsp.org  
5 Shasta, Irvine 92612  
949-682-4040

Celebrating its 16th year, the Orange County Jewish Community Scholar Program shares the joy of Judaism, builds community, and celebrates Jewish heritage with a rich adult education program and unique family experiences.

## Rohr Jewish Learning Institute

myjli.com  
888-YOUR-JLI

JLI uses innovative educational methods to make Jewish learning accessible and personally meaningful to every Jew, regardless of background or affiliation. JLI courses and lectures are offered all over Orange County - visit the website to find the location nearest to you, or contact your local Chabad Center.

## Hebrew Study

Virtually every congregation in Orange County offers Hebrew classes, from conversational Hebrew to adult Bar/Bat Mitzvah training to courses designed to help you navigate your prayer book.

Online learning resources:  
eteacherhebrew.com  
hebrewpodcasts.com  
learnhebrewpod.com

## Yiddish Study & Conversation

Some congregations offer Yiddish instruction. Check directly with the congregations to learn more.

## REGIONAL EDUCATIONAL RESOURCES

### Academy of Jewish Religion

ajrsem.org  
213-884-4133

Pluralistic seminary for rabbis and cantors in Los Angeles also offering an M.A. in Jewish Studies.

### American Jewish University

aju.edu  
805-582-4450

Lectures, continuing education and academic degrees at AJU's Los Angeles and Simi Valley campuses.

### California Institute for Yiddish Culture and Language

yiddishinstitute.org  
310-745-1190

### Hebrew Union College-Jewish Institute of Religion

huc.edu  
213-749-3424

Rabbinic seminary, graduate degrees in Jewish Education and in Jewish Nonprofit Management.

### LA Museum of the Holocaust

lamoeth.org  
323-651-3704

Free Holocaust museum located in Pan Pacific Park

### Museum of Tolerance

museumoftolerance.com  
310-772-2505

Educational wing of the Simon Wiesenthal Center, an international human rights organization.

### Skirball Cultural Center

skirball.org  
310-440-4500

Museum, exhibitions, concerts and lectures.

### Touro College

legacy.touro.edu/losangeles  
323-822-9700

A Jewish-sponsored independent institution of higher and professional education.

### USC Shoah Foundation

sfi.usc.edu  
213-740-6001

Visual history archive collection and preservation; teacher education, academic and education programs.

### Yiddishkayt-LA

yiddishkaytla.org  
213-389-8880

# CATERING WITH ELEGANCE

# CALIFORNIA FLAVOR

**WE CATER GLATT KOSHER AT THE  
FOLLOWING WATERFRONT VENUES:**

Montage Laguna Beach  
Occasions Laguna Beach  
Resort at Pelican Hill Newport Beach  
St Regis Monarch Beach  
Terranea LA's Waterfront Resort



*Blueberry Hill*

CATERING WITH STYLE SINCE 1990

**WE'RE AVAILABLE FOR ALL OF YOUR CATERING NEEDS:**

- Brit Milah • Baby Namings • Shiva Minyans
- Parties for all Occasions • Holiday Meals To Go
- Kosher and Kosher Style Catering

**Kosher Catering (949) 435-3400 ext. 239**

**All Other Catering (562) 981-8300**

**[www.blueberryhillcatering.net](http://www.blueberryhillcatering.net)**



Blueberry Hill works with small, local, family farmers committed to sustainable agriculture, responsible production, and promotion of fruits and vegetables with exceptional flavor. Some of our favorites include: Beylik Farms, Kenter Canyon Farms, Pudwill Farms, Babe Farms





**Jewish Federation  
& Family Services**  
ORANGE COUNTY

## **Milton & Doris Chasin Micro-Enterprise Loan**



### **Open to:**

- Full-time residents of Orange County
- People of all beliefs and backgrounds
- Start-ups or existing small businesses

### **Loans are:**

- Interest-free, no fees
- \$15K average (up to \$25K)
- Collateral: 2 co-signers w/650+ credit

### **Get started:**

- Email [assist@JFFS.org](mailto:assist@JFFS.org)
- Provide your name, phone, email & short business description

The Chasin Micro-Enterprise Loan Fund has been made possible by a significant grant from Milton and Doris Chasin, and by contributors to the Chasin Family Matching Fund. The Fund is administered in partnership with Jewish Free Loan Association, Los Angeles.

# David & Avarelle Silver-Westrick

## Owners of Keller Williams OC Coastal Realty

### We KNOW Orange County

David voice/text 949-874-0657  
Avarelle voice/text 949-874-0658  
[www.Silver-Westrick.com](http://www.Silver-Westrick.com)

CALERE 01004834 and 01006429



**Have you ever had Shabbat dinner or lunch at the home of an Orthodox rabbi and rebbetzin?**

**Just you, a companion, and maybe two or three other people at an intimate Shabbat table?**

**Come join us for Shabbat dinner or lunch — free of charge; it's our mitzvah — and experience Shabbat with us.**

**Drop us an email, and let's do it!**

**Rabbi Dov Fischer**  
**Young Israel of Orange County**  
[rabbi@yioc.org](mailto:rabbi@yioc.org)





# ISRAEL & OVERSEAS



Israel – the Jewish homeland – is an important part of our history and heritage. The Jewish community in Orange County is committed to forging meaningful and lasting connections to Israel and our Jewish roots for people of all ages. From celebrations to missions to Israel, to ongoing support for Israeli communities and more, Orange County stands with Israel here and there, now and forever.





JFFS is committed to strengthening our community through the formation of lasting connections to Israel and our Jewish roots.

In addition to the project spotlights on this page, JFFS is proud to partner with the Merage JCC in presenting an annual celebration of Israel's Independence Day.

Visiting Israel? Check out JFFS sister communities as well as the Merage JCC's sister community of Kfar Yona!

Be sure to read about the Passport to Jewish Life® educational grants available from JFFS for some Israel experiences (page 42).

### **JFFS ISRAEL OPPORTUNITIES** **Israel-JFFS Sister Communities**

[JewishOC.org/Israel](http://JewishOC.org/Israel)

[Kathleen@JFFS.org](mailto:Kathleen@JFFS.org)

Our Israeli sister communities – the city of Kiryat Malachi and the surrounding rural Ashkelon Coast Region – offer exciting opportunities to visit, volunteer, adopt projects, create b'nai mitzvah connections, and so much more.

### **Birthright Israel Trips**

[JewishOC.org/NextGen](http://JewishOC.org/NextGen)

[NextGen@JFFS.org](mailto:NextGen@JFFS.org)

The gift of a lifetime - a free 10-day trip for young adults! You can choose The Hillel Explore Israel Campus Trip for students ages 18-26, or Birthright Israel: The OC Way, for OC young professionals and students ages 21-26. If you are Jewish and have never been on an organized peer-group trip to Israel, Birthright Israel is for you!

### **Israel Grant Support**

[JewishOC.org/Israel](http://JewishOC.org/Israel)

[Grants@JFFS.org](mailto:Grants@JFFS.org)

Grant support for projects in Israel is provided by JFFS donors to the Connect 2 Israel Initiative and administered by a lay leadership committee under the auspices of the JFFS Planning & Funding Council.

### **MORE ISRAEL RESOURCES: OC Jewish Women's Renaissance Project (JWRP)**

[jwrp.org](http://jwrp.org)



An international organization, with a group in Orange County, that seeks to inspire women of all streams of Judaism to transform themselves, their families and communities. Its flagship program is Momentum, an 8-day journey through Israel. Upon their return, they continue the kinship through shared work in community projects.

### **Shevet Tapuz - Israeli Scouts of Orange County**

[ocshevet.org](http://ocshevet.org)

Affiliated with the Israeli Scouts of North America, Shevet Tapuz is a scouting program conducted in Hebrew that aims to strengthen relationships between Israel and OC, project Israel in a positive light, and to promote teamwork and respect among people of all faiths. Scouts' activities are youth-led, and include camping trips, music, sport, holiday celebrations and ceremonies, and Israel advocacy training.



# TRAVEL & STUDY IN ISRAEL!



*Israel comes alive in an exciting array of programs for students, young professionals and adults of all ages! Check out this sampling of websites to get a taste:*

## **destinationisrael.com**

Organizes trips for young adults to experience Israel through volunteering, internships or teaching fellowships, learning Hebrew, living on a kibbutz or experiencing community and more. Short- and long-term trips available.

## **masaisrael.org**

Masa Israel Journey offers young adults between the ages of 18 and 30 over 200 gap year, study abroad, internship, volunteer and Jewish study opportunities all over Israel lasting between five and twelve months. Supported by JFFS through Jewish Federations of North America.

## **livnot.org**

Livnot U'Lehibanot (To Build and To Be Built) is geared toward Jews

21-30+ with little or no background in Judaism. Participants learn, hike, work, live and explore Judaism together in Tzfat and all over Israel; programs from 1 to 6 weeks.

## **youngjudaea.org**

Young Judaea has everything from gap-year programs for recent high school graduates to programs for college students and young professionals.

# TRAVEL & STUDY IN ISRAEL!

## **[americanjewishleague.org](http://americanjewishleague.org)**

The American Jewish League for Israel offers scholarships for a full year of study, graduate or undergraduate, at one of 9 universities in Israel. There is no age restriction.

## **[israelxp.com](http://israelxp.com)**

The Israel Experience at Bar Ilan University is a unique gap year program. Spend the year after high school in Israel strengthening your Jewish identity, seeing the land of Israel, and connecting with amazing role models.

## **[careerisrael.com](http://careerisrael.com)**

Career Israel is a summer and five-month professional internship program open to Jewish college graduates from all over the world. The program provides internship placements in leading companies and organizations in the private and public sectors in Israel. Includes a Hebrew study program, tours and extracurricular enrichment activities.

## **[mayanot.edu](http://mayanot.edu)**

The Mayanot Institute of Jewish Studies offers year, semester, month, summer, winter and post-Birthright study programs for men and women 20 years of age and older.

## **[hasbarafellowships.org](http://hasbarafellowships.org)**

Hasbara Fellowships brings hundreds of college-age students to Israel every summer and winter for 16-day intensive learning experiences in pro-Israel advocacy.

## **[vfi-usa.org](http://vfi-usa.org)**

Volunteers for Israel connects Americans to Israel and Israelis through volunteer service on IDF bases, through extended Taglit-Birthright tours and a summer international youth program. Open to people age 17 and older.

## **[uhaifa.org](http://uhaifa.org)**

The University of Haifa International School offers intensive summer language courses in Hebrew and Arabic; a September Academic Study tour; 6-week archaeological field school programs; and public health and nursing summer programs for students who are high school graduates and above the age of 18.

## **[nesiya.org](http://nesiya.org)**

The Nesiya Institute's Summer Israel program combines different ways of exploring and participating in Israeli life, including: outdoor and wilderness adventures, arts and cultural activities, community service projects, creative text study, and building community. Open to North American and Israeli high school students currently enrolled in grades

10, 11 and 12. Includes follow-up programs in North America.

## **[overseas.huji.ac.il/summeratris](http://overseas.huji.ac.il/summeratris)**

Hebrew University in Jerusalem offers short-term summer abroad programs in English that enable students to combine an enriching academic experience with stimulating co-curricular and extracurricular activities, seminars, and trips, providing students with an enriching social and academic experience that extends beyond the limits of the classroom.

## **[international.tau.ac.il/summer\\_admissions](http://international.tau.ac.il/summer_admissions)**

Tel Aviv University Summer Institute offers summer language courses in Hebrew, Yiddish and Arabic, undergraduate and advanced courses, and specialized courses such as Homeland Security Executive Certificate, Epidemiology and Preventative Medicine, Environmental Studies, Food, Safety & Security and Migration Studies.

This is just a sampling of many Israel programs out there. JFFS and JLife do not endorse any programs; please visit these sites to learn more. In addition, you can check with your local congregation or with the JCC Center for Jewish Life, to learn about additional Israel opportunities.





## HAS YOUR CHILD BEEN DIAGNOSED WITH A LEARNING DIFFERENCE SUCH AS DYSLEXIA?

**PRENTICE IS THE ANSWER** FOR STUDENTS WHO LEARN DIFFERENTLY!



- ✓ Since 1986, we've been empowering children with learning differences to fulfill their potential as students and citizens.
- ✓ Lifelong learning is possible at The Prentice School.
- ✓ We offer an unparalleled learning experience for students whose needs have not been met in a traditional classroom setting.

**FOR MORE INFORMATION:** 714.244.4600 | [www.prentice.org](http://www.prentice.org)

**Schedule a tour today!**

We serve K-8. Financial options are available.

## ORANGE COUNTY'S PREMIER PERSONAL TRAINING TEAM INVITES YOU TO SCHEDULE YOUR FREE FITNESS EVALUATION TODAY!

[www.ocfitnesscoach.com](http://www.ocfitnesscoach.com) (949) 829-4589

### REAL CLIENTS... REAL RESULTS!



- Lose 100 lbs!
- Feel Better about Self
- Gain Confidence

**REACHED GOAL!**



- Lose 50 lbs!
- Have More Energy for Kids
- Improve Muscular Strength and Diet

**REACHED GOAL!**



- Lose 75 lbs!
- Improve General Strength
- Improve Cardiovascular Conditioning

**REACHED GOAL!**

"If you are truly ready to make a change in your life, I'll be there with you every step of the way and I will hold you accountable for your diet and exercise. This is my personal promise and commitment to you."

— Dan Tatros, President - OC Fitness Coach



**OC fitness coach**

*The* **HEBREW ACADEMY**

DISCOVERING EXCELLENCE IN EACH CHILD

Serving the entire Jewish community

## ENROLL NOW



## ENSURE SUCCESS FOR YOUR YOUNG SCHOLAR!

**Shuttle Buses · 15 minutes from Irvine · Small Class Sizes**  
**Academic Specialists · Technology Integration · Coding**  
**Project Based Learning · Visual and Performing Arts**  
**Need-based Scholarships Available**

## #1 PRESCHOOL IN OC

\*based on OCDE Rating

**PRESCHOOL · ELEMENTARY · MIDDLE SCHOOL · HIGH SCHOOL**



WASC ACCREDITED  
 TWICE-AWARDED BLUE RIBBON  
 NAIS MEMBER



CALL TODAY  
 TO TOUR OUR 11-ACRE CAMPUS  
 714.898.0051 ext. 284  
 EMAIL [ADMISSIONS@HACDS.ORG](mailto:ADMISSIONS@HACDS.ORG)

[WWW.HACDS.ORG](http://WWW.HACDS.ORG)



Jewish Federation  
& Family Services  
ORANGE COUNTY

# *giving* is a Gift

Your philanthropy **elevates** the lives of others  
and **nourishes** your soul.

The opportunities are here at Jewish Federation & Family Services, Orange County. To get started, contact **Jay Epstein, Director of Philanthropy**, at **949.435.3483 ext. 323** or **Jay@JFFS.org**.

**Together**, we do the extraordinary.

**[JewishOC.org/Donate](https://JewishOC.org/Donate)**



# FAMILY IS EVERYTHING

Ensure l'dor va'dor.  
For wisdom and wealth.

Teach your adult children to successfully manage their inheritance and make l'dor va'dor a reality for your own family.

**Klein Financial Advisors can help:**

- Protect and transfer your wealth
- Educate and empower the next generation
- Ensure your family legacy

CALL US FOR A CONFIDENTIAL CONVERSATION  
949.477.4990 | [www.KleinAdvisors.com](http://www.KleinAdvisors.com)

**Lauren Klein, CFP®**

NAPFA Registered Fiduciary  
Board Member of Heritage Pointe

**KLEIN**  
FINANCIAL ADVISORS  
INCORPORATED

## Your Friend in Real Estate.

8,342 AGENTS · \$8.173B SALES YTD  
24,078 CLOSINGS YTD · 17 STATES · 70 OFFICES

**If you are interested in:**

- Buying/selling residential and income properties
- Mortgage and mortgage protection



I'll be happy to provide consultation at no fee.

**Call Attila Szenczi Molnar**  
**949-514-2131**  
Cal License # 01821875



TEXT "1002" to 90407 for the deal!

## ACTION AWNINGS

**PATIO COVERS •  
RETRACTABLES •  
FABRIC & METAL  
AWNINGS**

Contact Seth Harrelson (lic. #445577)  
**714-647-1546**

[actionawnings1@gmail.com](mailto:actionawnings1@gmail.com)  
[ActionAwningsCA.com](http://ActionAwningsCA.com)

## LaShanah Tovah



Covenant B'nai B'rith,  
Unit 2215

Meeting Bi-Monthly  
Marie Callender's Restaurant  
13252 Brookhurst St,  
Garden Grove, CA 92840

President: Cathy Gassman

**714-534-5880**  
[www.bnaibrith.org](http://www.bnaibrith.org)

## Dance the night away!

### Dance Lessons by Diana

Great for weddings, anniversaries  
or a perfect first date!

Singles, couples, all ages  
and skills welcome.

**949.351.6873**

[dancebydiana.com](http://dancebydiana.com)



# COME, CONNECT & CREATE YOUR JEWISH FUTURE

Be part of 61 years of Jewish enrichment, spirituality and inspiration in North Orange County!



**EXPERIENCE UPLIFTING CONSERVATIVE  
WORSHIP SERVICES, LEARNING AND  
LIFE-CYCLE EVENTS IN A SPIRITED,  
CARING COMMUNITY.**

- Traditional And Alternative Shabbat & Holiday Services
- Shabbat Dinners & Programs
- Engaging Adult Education
- Women's League & Men's Club
- B'nai Mitzvah Training For All Ages
- Mitzvah Day And Tikkun Olam Projects
- Judaica Gift Shop
- Home Of The Ezra Center For Active Adults

JOIN &  
RECEIVE  
**FREE**  
MEMBERSHIP  
FOR YOUR  
FIRST YEAR

**Temple Beth Emet warmly  
welcomes interfaith couples  
and families wishing to embrace  
Jewish tradition.**

---

**JOEL BERMAN, RABBI**

**ZEV BROOKS, CANTOR**

**DR. MORDECAI KIEFFER,  
RABBI EMERITUS**

---

**MARY ANN MALKOFF,  
EXECUTIVE DIRECTOR**



**Temple Beth Emet**

1770 West Cerritos Avenue | Anaheim, CA 92804

**For more information, contact**

**Mary Ann Malkoff: (714) 772-4720**

**[maryann@tbe-oc.org](mailto:maryann@tbe-oc.org) | [www.tbe-oc.org](http://www.tbe-oc.org)**



# JEWISH LIFECYCLE & PRACTICES

Jews all over the world are united by the traditions and practices passed down from generation to generation for thousands of years. From the symbols and rituals associated with major life events, to the many different Jewish aspects in our daily lives, our traditions guide us and give us meaning.



# JEWISH LIFECYCLE & PRACTICES



## LIFE EVENTS

### Birth

A new child is ushered into life with great joy. Tradition teaches us that boys are circumcised at eight days old (unless there are medical complications) and girls are named at the Torah reading, usually as soon as possible after birth. A mohel should be engaged to do the brit milah (bris), the circumcision. As experts they perform many a week and have the experience and knowledge of traditions. Many Jews have a “Shalom Zachar” (literally “peace to the young boy”) celebration the Friday night before the brit milah. A meal is served at the brit milah and many have the tradition of sponsoring a Kiddush at services in honor of a new daughter.

- Find a mohel at [mohelusa.com](http://mohelusa.com) or [beritmila.org](http://beritmila.org).
- Register your newborn at: [JewishOC.org/ShalomBaby](http://JewishOC.org/ShalomBaby) to receive a special gift bag, hand-delivered by one of our welcoming volunteers!
- Sign up for The PJ Library! (see page 48).

### Three: The Age of Education

At three, the age of Jewish education begins. Young girls begin to light one Shabbat candle every Friday night with their mothers. Some Jews cut the hair of their sons for the first time on their 3rd birthday, marking the beginning of the educational process (called the upsherin). Boys begin to wear kippot (yarmulkes) at age three.

### Bar/Bat Mitzvah

Children become adults, in the eyes of Jewish law, when a boy reaches the age of thirteen, and a girl reaches the age of twelve (in Conservative and Orthodox Judaism) or thirteen (as practiced in Reform and Reconstructionist Judaism as a sign of equality). From that point on, they are obligated in the fulfillment of the commandments. We celebrate this milestone with reading the Torah, beginning to observe the commandments and a celebratory meal.

Many children also take on a “mitzvah project” – a volunteer or fundraising activity – to demonstrate their commitment to Jewish community service. Jewish Federation & Family Services has a wealth of ideas for B’nai Mitzvah boys and girls, including projects that partner them with our sister communities in Israel. Email [Volunteer@JFFS.org](mailto:Volunteer@JFFS.org) for more.

### Marriage

Weddings mark the beginning of a new Jewish family. Traditionally, they are held under a chuppah (canopy), and some hold weddings under the open sky. Traditional wedding practices include fasting by the couple (as it is considered a ‘personal Yom Kippur’ and all their sins are forgiven), veiling of the bride, standing under the chuppah, where a ring is (or rings are) presented and the ketubah (wedding contract) is read, and recitation of seven blessings. At



# JEWISH LIFECYCLE & PRACTICES



the end of the ceremony, a glass is broken, symbolizing that even in our moments of greatest joy we remember the painful moments of Jewish history. Talk to a rabbi to learn more! (see pages 80-85 for a listing of rabbis).

## Divorce

Local rabbis – Chabad, Conservative, Independent, Reconstructionist and Reform – provide divorce counseling and can counsel divorcing couples on obtaining a “get” (religious divorce). Find a clergy person through our Congregations & Rabbis section. Jewish Federation & Family Services’ counseling staff provides couples counseling as well as counseling assistance for people going through divorce (see page 30).

## End of Life

Jewish tradition teaches us that we should bury our loved ones. The mitzvah is called chessed shel emet: a true kindness. Immediate family sit shiva, a week of mourning (shiva is the Hebrew word for seven). During this time, they abstain from formal work and celebrations, and cover the mirrors in their homes. Friends and family visit them and conduct services in the home. A tombstone may be erected any time after the week of shiva is completed. Some do so right away; others wait for the first yahrzeit (anniversary of the passing). It is customary to give charity and to learn Torah in the memory of a loved one.

- Chevra Kadisha-Jewish Burial Society / 323-654-8415 / chevradisha.com
- Malinow & Silverman Mortuary / 800-710-7100 / malinowsilverman.com
- Pacific View Memorial Park / 949-644-2700 / pacificview.us
- Harbor Lawn-Mt. Olive Memorial Park / 714-540-5554 / harborlawn.com
- South Coast Family Funeral Services / 888-607-0772 / southcoastfunerals.com
- Find a Jewish cemetery anywhere in the world through the Jewish Genealogical Society: [iajgsjewishcemeteryproject.org](http://iajgsjewishcemeteryproject.org)
- Jewish Federation & Family Services offers individual and group bereavement counseling (see page 30)
- Find a rabbi through the Congregations & Rabbis listings on pages 80-85.

## JEWISH PRACTICES

### Mezuzah

“You shall write them upon the doorposts of your home and your gates.” Deuteronomy 6:9 11:19

A mezuzah mounted on the doorpost designates a home as Jewish, reminding us of our connection to G-d and to our heritage. A mezuzah is not, contrary to popular belief, the outer container. The mezuzah is actually the parchment scroll within, on which the “Shema” (a biblical passage declaring the oneness of G-d) is handwritten by an expert scribe. The placing of a mezuzah

# JEWISH LIFECYCLE & PRACTICES



on the doors of a home or office protects the inhabitants, whether they are inside or outside.

- Purchase a mezuzah case at your congregation gift shop, at the Golden Dreidle Judaica shop in Irvine, or at one of the many online Jewish shopping resources.
- For a kosher mezuzah scroll and the blessing, consult your rabbi.

## Mikvah

The Torah instructs us to immerse ourselves in the living waters of the mikvah, the Jewish ritual bath, at times of transition from one spiritual state to another (for example, upon conversion, before a wedding, before Shabbat). Women who observe the traditions of Taharat Hamishacha (Family Purity) immerse monthly

before they renew physical relations with their spouse.

- The Orange County Mikvah is at 19045 Yorba Linda Boulevard, Yorba Linda 92886 / 714-693-0770 / ocmikvah.com
- The Irvine Community Mikveh is at 3900 Michelson Drive, Irvine 92612 / 949-207-7177 / irvinemikveh.org
- Visit OCMikvah.org to find a mikvah anywhere around the globe!

## Tallit & Tzitzit

There is a biblical command to attach fringes to the corners of four-cornered garments, such as the tallit (prayer shawl). The strings and knots of the fringe tassels are called tzitzit, and are a physical representation of the Torah's 613 do's and don'ts.

## Tefilin

"You shall bind them as a sign upon your hand, and they shall be for a reminder between your eyes." Deuteronomy 6:8

Tefillin are a pair of black leather boxes containing Hebrew parchment scrolls, used by Jewish males age 13 and up. A set includes two tefillin - one for the head and one for the arm. Each consists of three main components: the scrolls, the box and the strap. Once a day, preferably during the morning prayers, one box is strapped on the head, and the other onto the arm next to the heart.

## INTERFAITH & CONVERSION

### Interfaith Resources

Many of our community's congregations welcome interfaith couples and families, and several have active outreach programs for interfaith couples. See our Congregation & Rabbis section on page 80-85. In addition, the Merage JCC Center for Jewish Life offers information and resources through its new Interfaith Connections program. you can also visit [interfaithfamily.com](http://interfaithfamily.com).

### Choosing Judaism

Local rabbis (Reform, Reconstructionist, Conservative, Chabad, Orthodox and Independent) can provide information to community members interested in choosing Judaism. See the Congregations & Rabbis listings on pages 80-85 to find a rabbi.



# SHABBAT



## Meaning & Rituals

Commemorating G-d's day of rest after six days of creation, Shabbat begins on Friday evening. Traditions include lighting candles, drinking wine and eating challah (braided bread) and attending services on Friday night or Saturday morning. The Bar or Bat Mitzvah ceremony is a central feature of Shabbat morning services. Shabbat ends 25 hours after the candle lighting. Havdalah, the farewell ceremony to Shabbat, takes place upon the appearance of three stars in the Saturday night sky and is celebrated by lighting a braided candle, drinking wine and smelling sweet spices.

## Shabbat Candle Lighting

It is considered a great mitzvah and responsibility to honor the Sabbath by lighting candles 18 minutes before sunset on Friday evening. At least two candles are lit, representing the dual commandment to remember and to keep the Sabbath. This unique commandment, entrusted to the Jewish woman, is rich with meaning and purpose: she circles her hands over the candles, in an inward direction, welcoming the light and joy of Shabbat into her life and surroundings. She covers her eyes and recites the blessing:

ברוך אתה אדני, א-להינו מלך העולם, אשר קדשנו במצותו וצונו להדליק נר של שבת.

Baruch a-ta A-do-nay Elo-hei-nu me-lech ha-o-lam a-sheer ki-di-sha-nu bi-mitz-vo-tav vi-tzi-va-noo li-had-leek ner shel Sha-bat (Amen).

Blessed are you, L-rd our G-d, King of the Universe, who sanctifies us with His commandments and has commanded us to kindle the Sabbath lights (Amen).

It is the custom in many Jewish homes for girls to begin lighting one candle from when they are three years old.

For **candle lighting times**, visit one of the online resources, which include [chabad.org](http://chabad.org), [uscj.org](http://uscj.org) and others, click on candle lighting and enter your zip-code.

## OC Mega Challah Bake

An annual event that engages the entire OC Jewish women's community, the OC Mega Challah Bake is coordinated by Chabad of Irvine. Visit [chabadirvine.org](http://chabadirvine.org) for the latest info so you too can learn how to make challah for your Shabbat celebrations!

# JEWISH HOLIDAYS 2016-2017/5777

## 2016

### Rosh Hashanah

#### JEWISH NEW YEAR

First day begins sunset Sunday October 2 (light candles at 6:16pm). Second day begins sunset Monday, October 3 (light candles after 7:09pm). Ends nightfall of Tuesday, October 4

The beginning of the Jewish year, Rosh Hashanah is a festive celebration during which individuals contemplate past, present and future actions. Traditional foods include round challah and apples with honey, symbolizing wholeness and sweetness for the New Year.

### Yom Kippur

#### DAY OF ATONEMENT

Begins sunset Tuesday, October 11 (light candles 6:04pm). Ends nightfall Wednesday, October 12.

The holiest day of the Jewish year. Through fasting and prayer, Jews reflect upon their relationships with other people and with G-d, atoning for wrongdoings and failures to take the right action. The sounding of the shofar (ram's horn) at sunset signals the end of the holiday.

### Sukkot

#### FESTIVAL OF BOOTHS

First day begins sunset Sunday, October 16 (light candles at 5:58pm). Second day begins sunset Monday, October 17 (light candles after 6:52pm). Ends nightfall Sunday, October 23

Sukkot commemorates the fulfillment of G-d's promise to bring the Israelites to the Promised Land after 40 years of wandering. Many people erect a sukkah (booth), a temporary structure with a roof made of branches, modeled after makeshift huts constructed in the desert in ancient times.

### Shemini Atzeret

#### EIGHT DAYS OF ASSEMBLY

Begins sunset Sunday, October 23 (light candles at 5:50pm).

Celebrated immediately after Sukkot and thus sometimes considered an extension of the holiday, Shemini Atzeret culminates the celebration of renewal and thanksgiving. This day marks the first time tefillat geshem (prayer for rain) is recited during services, a practice that continues until Passover.

### Simchat Torah

#### REJOICING IN THE TORAH

Begins sunset Monday, October 24 (light candles after 6:44pm). Ends nightfall Tuesday, October 25

Simchat Torah celebrates the completion of the annual Torah-reading cycle. After finishing the last sentence of the book Devarim (Deuteronomy), the Torah is joyously paraded seven times around the congregation. The new cycle begins immediately with a reading from Bereshit (Genesis).

### Hanukkah

#### FESTIVAL OF LIGHTS

Begins sunset of Saturday, December 24 (first candle). Ends nightfall of Sunday, January 1 (end of 8th day).

Hanukkah commemorates the Jewish victory over the armies of the Syrian-Greek emperor Antiochus, who outlawed Jewish observance some 2,200 years ago. The eight-day holiday is celebrated by lighting candles in a Hanukkiah (a nine-branched menorah), eating latkes (potato pancakes) and giving Hanukkah gelt (chocolate coins) as well as gifts.



# JEWISH HOLIDAYS 2016-2017/5777

## 2017

### Tu B'Shvat

#### NEW YEAR OF TREES

Saturday, February 11

Biblical in origin, this holiday celebrates springtime renewal and growth. Traditions include the planting of trees, and eating fruit, particularly the fruits mentioned in the Torah in praising the bounty of the Land of Israel: grapes, figs, pomegranates, olives and dates.

### Purim

#### FEAST OF LOTS

Begins sunset Saturday, March 11  
Ends nightfall Sunday, March 12

Purim commemorates the salvation of the Jewish people in Ancient Persia from Haman's plot to annihilate them. Traditions include the Purimshpiel (a reenactment of the story in costume and song), mishloach manot (gift giving), and eating Hamantashen (three-cornered fruit-filled pastries).

### Pesach

#### PASSOVER

Begins sunset Monday, April 10. Light candles: April 10 at 7:01pm; April 11



after 7:58pm; April 16 at 7:05pm; and April 17 after 8:03pm. Ends nightfall Tuesday, April 18.

Pesach celebrates the liberation of the Israelites from slavery in Egypt. At the Seder (service/ festive meal), the Haggadah is read, and symbolic foods are eaten. In remembrance of the hasty departure from Egypt, when the Israelites could not let bread rise before fleeing, matzah is eaten for 8 days.

### Yom HaShoah

#### HOLOCAUST REMEMBRANCE DAY

Begins sunset Sunday, April 23. Ends nightfall Monday, April 24

Yom HaShoah is a day of mourning for the 6 million Jews murdered in the Holocaust. In Israel, a siren's blast allows collective remembrance in a moment of silence. In Orange County various commemorative ceremonies are held. Check [JewishOC.org](http://JewishOC.org) for calendar listings.

### Yom HaZikaron

#### ISRAELI REMEMBRANCE DAY

Monday, May 1

On Yom HaZikaron, we remember all who sacrificed their lives for the state of Israel in armed conflict, and the people who have fallen in terror attacks. The annual remembrance

# JEWISH HOLIDAYS 2016-2017/5777



ceremony in Orange County is presented by the Israeli Scouts in partnership with the Israel Center of Jewish Federation & Family Services.

## Yom Ha'Atzmaut ISRAELI INDEPENDENCE DAY

Tuesday, May 2

On the 5th of the Jewish month of Iyar (which was May 14, 1948 on the Gregorian calendar), Israel was declared an independent state. Today, Jews all over the world celebrate the birth of Israel with parades, festivals, and donations to Jewish charities. In Orange County, we celebrate Israel's birthday each year at Israel Expo, a free community-wide celebration.

## Lag B'Omer

### 33<sup>RD</sup> DAY OF THE OMER

Sunday, May 14

A break in the weeks of mourning between Passover and Shavuot, this holiday traditionally commemorates a halt in the plague that afflicted Rabbi Akiva's students in ancient Israel. The holiday is celebrated with picnics and bonfires.

## Yom Yerushalayim JERUSALEM DAY

Wednesday, May 24

Jerusalem Day is an Israeli national holiday celebrating the reunification of Jerusalem in 1967. It is also a memorial day in Israel for some four thousand Ethiopian Jews who died before reaching Jerusalem during Operation Moses and Operation Solomon.

## Shavuot

### FESTIVAL OF WEEKS

Begins sunset Tuesday, May 30 (light candles at 7:38pm). Light candles Wednesday, May 31 after 8:39pm  
Ends nightfall Thursday, June 1

Shavuot is celebrated seven weeks after Passover to commemorate the giving of the Torah at Mount Sinai, and the spring harvest. Traditionally, Jews read the Ten Commandments

and the Book of Ruth, and eat dairy products. Religious school confirmation ceremonies often take place at this time.

## Tisha B'Av

### NINTH OF AV

Begins sunset Monday, July 31. Ends nightfall Tuesday, August 1

The ninth day of the Hebrew month of Av is a day of fasting and mourning and prayer commemorating the destruction of the First and Second Temples, both of which took place on this day, 656 years apart.

## Tu B'Av

### FIFTEENTH OF AV

Monday, August 7

An ancient and modern holiday, Tu B'Av is noted in the Talmud as a matchmaking day for unmarried women in the Second Temple Period. Celebration of Tu B'Av has been rejuvenated in recent decades, particularly in Israel, as a holiday of love.

For more information on Jewish holidays and observances, consult your rabbi, or visit one of these Internet resources:

- [chabad.org/holidays](http://chabad.org/holidays)
- [ou.org/holidays](http://ou.org/holidays)
- [reformjudaism.org/jewish-holidays](http://reformjudaism.org/jewish-holidays)
- [uscj.org](http://uscj.org)



# KOSHER IN OC



## IS IT KOSHER?

How can you ensure that a product or establishment is truly kosher? Just because it says 'kosher' on it, does not mean it really is! True kosher certification can only be given by an Orthodox rabbinical council or organization, and will be clearly marked on products and indicated in shop or restaurant windows. Here is a quick guide:

### Symbols on Products:

**U** The most well-known and largest certification organization is the Orthodox Union, whose famous "OU" logo is now seen on more than 400,000 products around the world. OU certification indicates "that a product may be consumed by all who observe kosher dietary laws, as well as by others with special dietary requirements, such as Muslims and Seventh Day Adventists. It also serves as a guide to millions of individuals who are vegetarian or lactose intolerant."

**K** There is also the "OK" kosher certification standard which was

started in 1935 and provides certification for food giants like Kraft, Tropicana, Keebler, and the Miller Brewing Company. OK certifies more than 114,000 products produced by more than 1500 companies.

### Kosher Supervision - Fresh Food Preparation

- Eating establishments - such as restaurants, hotels and caterers - require certification by a reliable rabbi or kashrut supervision agency to ensure that all food is prepared in a kosher environment and is free of any trace of non-kosher ingredients.
- In our community, this service is provided by the Rabbinical Council of Orange County, a team of five rabbis who set the policy for OC restaurants, food stores and hotels. The Rabbinical Council also oversees the OC Kosher market in Tustin, the JCC Cafe in Irvine and others.
- There are other rabbis involved in day-to-day issues, like the Mashgichim who supervise kosher food preparation to the public or act as consultants. The Mashgichim get paid for their time at an event, but otherwise all the rabbis do this work gratis.
- Establishments certified as kosher will have a copy of their official certificate from one of these bodies clearly posted in their windows or on menus and websites.

If you live in Orange County and keep kosher (or want to!), the available resources for take-out, cook-it-yourself or a hotel banquet are growing as fast as our community, and making it easier than ever.

## FOOD SHOPS & MARKETS

### OC Kosher

ockosher.com  
688 El Camino, Tustin 92780  
714-838-3108

Market with a wide selection of fresh and frozen groceries, meat and chicken, wine and baked goods. Glatt kosher deli sandwiches, entrees and fresh barbecue chicken available for take out. Outside seating available. Certification: Rabbinical Council of Orange County

### Sun Flour Bakery

sunflourbakery.net  
2950 Grace Lane, Costa Mesa 92626  
714-424-0176  
info@sunflourbakery.net

Orange County's original certified kosher parve bakery, which means that there's not a trace of dairy in anything they make. The Sun Flour line includes a full selection of artisan breads, challah, rolls, muffins, cakes, pies and cookies. They also offer many vegan-friendly and gluten-free options.

### Trader Joe's

traderjoes.com  
Fresh kosher chickens and fresh glatt

# KOSHER IN OC



kosher meat are available. For kosher products at other area supermarkets such as Albertsons, Ralphs, Gelson's, Pavilions, Mother's Market, Wholesome Choice, Irvine Ranch Market and Costco, consult the store managers or look for the OU or OK certification on packages.

## DINING & TAKE-OUT

### Cafe @ The J

jccoc.org/about/cafe-at-the-j  
1 Federation Way, Irvine 92603  
949-435-3400  
bbhcatering@verizon.net

Situated inside the Merage JCC, this small café serves a variety of certified kosher offerings, including fresh baked muffins, egg burritos, pizza, salads and sandwiches. Everything is prepared on site by Blueberry Hill Kosher Catering. The cafe does not sell meat items. Certification: Irvine Vaad HaKashrut

### Disneyland

Kosher meals can be accommodated at all Disneyland table-service and select quick-service restaurants. Kosher meals should be requested 24 hours in advance by calling 714-781-

DINE (3463). Guests under 18 years of age must have parent/guardian permission to call.

### The Coffee Bean & Tea Leaf

coffeebean.com

These cafes are kosher, although the products are not Cholov Yisroel. Check website for locations in Orange County.

## CATERING

### Blueberry Hill Catering

blueberryhillcatering.net



**HOW TO DO  
KOSHER!**  
**A 15-STEP GUIDE:**  
**CHABAD.ORG/  
KOSHER**

562-981-8300  
bbhcatering@verizon.net

Offers a full range of kosher menus, including holiday and Kiddush menus, breakfasts, platters, sandwiches, pizza and more. Meat and dairy available. Caters numerous events for Jewish Federation & Family Services, and is a co-sponsor of many special events for JFFS. Certification: Irvine Vaad HaKashrut

**Catering by Nina**  
949-633-3628  
nvarkel@gmail.com

Catering and event planning for a wide range of occasions. Clientele includes Beth Jacob Congregation. Certification: Irvine Vaad HaKashrut

**Hotz Stuff Personal Chef Service**  
949-651-0866  
hotzstuff@cox.net

Provides glatt kosher catering everywhere. They are also the food



service provider at Tarbut V'Torah Community Day School.

**L'Chaim Kosher Catering & Events**  
koshercateringlchaim.com  
562-595-0100

L'Chaim is the glatt kosher division of TGIS (Thank Goodness It's Sofia) catering. Certification: Rabbinical Council of Orange County

## HOTELS

A number of hotels in Orange County can accommodate kosher events. They include:

- Balboa Bay Club
- Hilton Costa Mesa
- Hotel Irvine
- St. Regis Monarch Beach

Changes may occur. Please double check kosher status with hotels before booking events.

## KOSHER ON THE INTERNET

Find kosher resources, around the world or around the corner, at:

- ou.org
- ok.org
- chabad.org/kosher
- shamash.org/kosher
- kosherquest.org
- kosher.co.il

Did we miss something great and kosher? Email [Info@JFFS.org](mailto:Info@JFFS.org) with subject line 'Community Directory-Kosher' and we'll include it next time!

*Women's Philanthropy*



Jewish Federation & Family Services  
ORANGE COUNTY

## Reading Partners



# VOLUNTEERS WANTED!

**Help children learn to read!**

Reading Partners is a **volunteer literacy program** in OC public schools (K-3) sponsored by Women's Philanthropy of Jewish Federation & Family Services.

All it takes is just **one hour a week** to make a huge difference in a child's life. Men and women of all backgrounds and beliefs are invited to volunteer!

Learn more and apply:

**[JewishOC.org/RP](http://JewishOC.org/RP)**

Sponsored by the Zechter Family

**[JewishOC.org/Women](http://JewishOC.org/Women)**





**We are the only full service synagogue  
in O.C. providing services three  
times a day, 365 days a year.**



**Delicious Weekly Kiddushes**



**Active NCSY Teen Program**



**Warm & Nurturing Jewish Montessori Preschool**

- Expanded Samson Family Campus • Olam Jewish Montessori Preschool • Social Hall
- Rabbi Yisroel Ciner • Irvine Community Mikveh • NCSY Teen Program • Life Cycle Events • Bar and Bat Mitzvah Training • Beth Jacob Women's Group • Hebrew Classes • Judaism and Torah Classes for Adults of all Levels • Jewish Enrichment Classes for Children • Regular Daily and Shabbat Services • Community Events • Guest Speakers • Delicious Weekly Kiddushes • Sephardic Minyan



**Contact (949) 786-5230 • [bethjacobirvine.org](http://bethjacobirvine.org)**

**Call for a tour of our preschool!**



**ENROLLING NOW FOR  
FALL 2016-2017 SCHOOL YEAR!  
PRESCHOOL FOR CHILDREN AGES 2-6**



**Developing Imaginative Minds**



**Nurturing a Sense of Wonder**



**Creating Spirituality**

Space is limited. For a tour and information, please email  
**Dawn Kreisberg** at [director@olamjewishmontessoricom](mailto:director@olamjewishmontessoricom)

**Call Olam at (949) 786-5230 • [olamjewishmontessori.org](http://olamjewishmontessori.org)**





## ORANGE COUNTY Community Breakfast

WITH SPECIAL GUEST SPEAKER MICAH HALPERN  
"Inside a Terrorist Mind"

**Sunday, September 11, 2016**

9:30 – 11:30 am

**Merage Jewish Community Center of Orange County**  
One Federation Way • Irvine, CA 92603

Register by September 5 to [jnf.org/ocbreakfast16](http://jnf.org/ocbreakfast16)  
or 949.260.0400 x964.

**EVENT CHAIRS:** Deby Goodman & Sima Staav

**DIRECTOR, ORANGE COUNTY:** Lisa Grier

Complimentary event • Dietary laws observed  
Israeli family-style breakfast



[jnf.org](http://jnf.org) • 800.JNF.0099



## Quality Swimming Pools

For over 60 years, **Swan Pools** has been creating **living environments**, with custom swimming pool designs as their centerpieces. As a swimming pool contractor, we work to understand our customers' hopes and dreams, needs and passions. Then we design and build practical, elegant spaces that **enhance their worlds**.



**Free Design  
Consultation  
& Estimate**

**(949) 859-8466**  
**[swanpools.com](http://swanpools.com)**

Serving Lake Forest and surrounding area  
24512 Bridger Rd | Lake Forest, CA 92630

License #440333



We invite you to  
share the joys of Judaism at  
**Temple Beth David**



An inclusive and welcoming congregation led by  
**Rabbi Nancy Myers and  
Cantorial Soloist Nancy Linder**

6100 Hefley St, Westminster, CA 92683  
www.TempleBethDavid.org ♦ (714) 892-6623

## WHERE MEMORIES ARE MADE UCI UNIVERSITY CLUB



An intimate setting for your  
most memorable celebration.  
Our park view, glass walls and  
high ceilings with skylights  
create a special atmosphere.



Call to schedule a tour today.  
**949-824-7961**  
801 E. Peltason Dr., Irvine, CA 92697  
www.ucclub.uci.edu

Mention this  
ad and receive  
**\$500 OFF**

## University Synagogue – A Place to Connect

Rabbi Arnold Rachlis and Cantor Ruti Braier

### Judaism that **Stretches** but **Doesn't Break**

Please join us as we learn, laugh, celebrate  
and debate our way together through  
modern Jewish life.

- Distinguished Speakers Series
- Contemporary Shabbat Services
- Dynamic education programs for all ages
- Active Dedication to Social Action



At University Synagogue, experience a renewed joy in Judaism. We welcome all  
who are interested in Judaism, including interfaith couples and anyone in search of  
a modern, rational and joyous approach to Jewish life.

**3400 Michelson Drive, Irvine - (949) 553-3535**  
**www.universitysynagogue.org**



# CONGREGATIONS & RABBIS



Our community is enriched by the diversity and quality of Jewish Orange County's religious congregations, havurot and community rabbis. Each brings a colorful thread to the fabric of Jewish life in our community and each provides opportunities for reflection, prayer, social action or cultural connection.

The classes and activities noted with each listing are merely a sample of the breadth of inspiring, exciting activity at each institution. Please also contact the rabbis regarding hospital, hospice and other healthcare facility visitations.

For specific information about Shabbat and holiday services, minyanim, havurot, classes, special programs and events, please visit the congregation websites, or contact them by phone or email.

## CHABAD

### Aliso Viejo

**Chabad of Aliso Viejo and Laguna Woods**

**chabadofalisoviejo.com**

23665 Moulton Pkwy., Suite D  
Laguna Hills 92653  
949-244-7627

Rabbi@Jewishalisoviejo.com

Rabbi Tzali Stillerman

Founded: 2008. Classes & Activities: Rohr Jewish Learning Institute; Torah Studies; Adult Education; Yiddish Club; Learning to Read Hebrew; Women's Circle; Sunshine Club for Seniors; Chicken Soup Delivery.

### Huntington Beach

**Chabad of West Orange County / Congregation Adat Israel**

**chabadhb.com**

5052 Warner Ave.  
Huntington Beach 92649  
714-846-2285

info@chabadhb.com

Rabbi Aron David Berkowitz

Founded: 1984. Classes & Activities: Hebrew School (Boys and Girls 5-13); Rohr Jewish Learning Institute; Women's Events; C-Teen (ages 13-18); Adult Education; Senior Program; Hebrew Reading Course; Shabbat Dinners.

### Chabad of S. Huntington Beach

**chabadhb.com**

8511 Doremere Dr.  
Huntington Beach 92646  
714-369-2847

RabbiYossi@chabadhb.com

Rabbi Yossi Berkowitz

Founded: 2005. Serves the 92646 area and Costa Mesa. Affiliated with Chabad of West Orange County. Classes & Activities: Shabbat and Holiday Dinners; Holiday and Family Programs; Bar/Bat Mitzvah Training; Weekly Torah Class; Monthly Jewish Women's Circle.

## Irvine

**Chabad of Irvine**

**chabadirvine.org**

5010 Barranca Pkwy., Irvine 92604  
949-786-5000

rabbir@chabadirvine.org

Rabbi Alter Tenenbaum

Founded: 1979. Classes & Activities: Preschool, Hebrew School (grades K-8); Rohr Jewish Learning Institute; Chabad Women; Rosh Chodesh Society; OC Mega Challah Bake; The Shabbos Project.

### Chabad of North Irvine

**chabadni.com**

5410 Trabuco Rd., Suite 130  
Irvine 92620  
714-86-TORAH

rabbir@chabadni.com

Rabbi Elly Andrusier

Founded: 2007. Classes & Activities: Shabbat Dinners, Adult Education; Women's Group.

## Laguna Beach

**Chabad of Laguna Beach**

**chabadoflaguna.com**

30804 S. Coast Hwy.  
Laguna Beach 92651-4222  
949-499-0770



# CONGREGATIONS & RABBIS

rabbi@chabadoflaguna.com  
Rabbi Elimelech Goorevitch  
Founded: 1985. Serving Laguna Beach and neighboring communities. Classes & Activities: Community Preschool and summer Torah Tots Kiddie Camp; Mommy And Me classes; Hebrew School (ages 5-13); Rohr Jewish Learning Institute; Ladies Home Club; JYZ Youth Zone; Bar/Bat Mitzvah Program.

## Laguna Niguel

### **Chabad of Laguna Niguel** **ChabadLagunaNiguel.com**

27631 La Paz Rd., Unit D  
Laguna Niguel 92677-3917  
949-831-7701

rabbi@ChabadLagunaNiguel.com  
Rabbi Mendy Paltiel  
Founded: 2006. Classes & Activities: Bagel Babies (newborn-18 months); Hebrew School; Shabbat Dinners; Adult Education; CTeen; Jewish Women's Circle; Men's Tefillin Club; Café Chabad; Rosh Chodesh Society; Counseling & Crisis Intervention; Sunshine Club for seniors; Community Lectures.

## Los Alamitos

### **Chabad of Los Alamitos & Cypress** **ChabadLosAl.com**

12340 Seal Beach Blvd., Suite B219  
Seal Beach 90740  
714-828-1851  
smarcus@jewishcypress.com  
Rabbi Shmuel Marcus  
Founded: 2002. Classes & Activities: Hebrew High; Teen J-Clubs at Los Alamitos High School; Grandma Ethel's Chicken Soup; Jewish

Women's Circle; Seniors Club; Chai Society Young Jewish Professionals.

## Mission Viejo

### **Chabad of Mission Viejo** **chabadofmv.com**

24041 Marguerite Pkwy.  
Mission Viejo 92692  
949-770-1270  
chabad@chabadofmv.com  
Rabbi Zalman Marcus  
Founded: 1995. Classes & Activities: Hebrew School (K-7); CTeen (grades 8-12); Adult Education; Torah and Talmud Class; Jewish Meditation; Jewish Bible Study Experience; Rohr Jewish Learning Institute; Jewish Women's Circle; Torah and Tea (Women's classes); short-term emergency and scholarship fund; Counseling and Crisis Intervention; Hospital and Senior Visitations; Comfort Meals; Substance Abuse Prevention.

## Newport Beach

### **Chabad Center for Jewish Life** **jewishnewport.com**

2240 University Dr.  
Newport Beach 92660  
949-721-9800  
info@jewishnewport.com  
Rabbi Reuven Mintz  
Founded: 2001. Classes & Activities: Hebrew School; Bar/Bat Mitzvah Training; Youth Programs; Adult Education; Men's Tefillin Club; Jewish Movie Night; Jewish Women's Circle; Senior Services; Hospital and Senior Visitation Programs; Friendship Circle (friends and mentors for children and teens with special needs).

## Rancho Santa Margarita

### **Chabad of Rancho S. Margarita** **jewishrsm.com**

PO Box 80073, RSM 92688  
949-264-6930  
rabbi@jewishrsm.com  
Rabbi Zalman A. Kantor  
Founded: 2009. Serves RSM and surrounding areas. Classes & Activities: Mommy & Me; Hebrew School (grades K-7); CTeen (grades 8-9); Adult Education; Jewish Women's Circle; Adult Socials; Kosher Culinary Club.

## San Clemente

### **Chabad of S. Clemente** **jewishsc.com**

1306 North El Camino Real  
San Clemente 92672  
949-489-0723  
info@jewishsc.com  
Rabbi Mendel Slavin  
Founded: 2004. Classes & Activities: Hebrew School; Jewish Women's Circle; Adult Education; Mommy & Me; Counseling.

## Tustin

### **Chabad of Tustin** **jewishtustin.com**

13112 Newport Ave., Suite H  
Tustin 92780  
714-508-2150  
info@jewishtustin.com  
Rabbi Shuey Eliezrie  
Founded: 2004. Serving Tustin area and Chapman University. Classes & Activities: Mommy & Me; Hebrew School; Hebrew High; Rohr Jewish Learning Institute; Jewish Women's Circle; Shabbat Dinners

## CONGREGATIONS & RABBIS

### Yorba Linda

**Congregation Beth Meir HaCohen/  
North County Chabad Center**  
**ocjewish.com**

19045 Yorba Linda Blvd.

Yorba Linda 92886

949-693-0770

rabbi@ocjewish.com

Rabbi Dovid Eliezrie

Rabbi Levi Blesofsky

Founded: 1982. Home to the Orange County Mikvah. Classes & Activities: Mommy & Me; Hebrew School; Hebrew High; Rohr Jewish Learning Institute; Talmud and Torah Study; Jewish Women's Circle.

### CONSERVATIVE

### Aliso Viejo

**Temple Beth El of South OC**  
**tbesoc.org**

Conservative and Reform services.  
See full listing on pages 84.

### Anaheim

**Temple Beth Emet**  
**tbe-oc.org**

1770 W. Cerritos Ave.

Anaheim 92804

714-772-4720

tbeanahemshul@gmail.com

Rabbi Joel Berman

Rabbi Emeritus Mordecai Kieffer

Cantor Zev Brooks

Founded: 1956. Classes & Activities: Women's League; Men's Club; Adult Education; Ezra Center (seniors).

### Laguna Hills

**Temple Judea**  
**templejudealw.org**

24512 Moulton Pkwy.



Laguna Hills 92653

949-830-0470

tjoffice@templejudealw.org

Rabbi Dennis Linson

Cantor Josef Chazan

Cantorial Soloist Susan Kotses

Founded: 1965. Classes & Activities: Religious School (K-8); Adult Education; Lecture Series; Men's Club; Sisterhood; Israel Advocacy; Social Action.



# CONGREGATIONS & RABBIS

## Mission Viejo

### Congregation K'hilat Horim heritagepointe.org

27356 Bellogente  
Mission Viejo 92691  
949-364-9685  
Rabbi Ralph Resnick  
Founded 2009. Serves the residents of Heritage Pointe, Orange County's only Jewish senior living community. K'hilat Horim is open to the community (all ages) for services.

## Newport Beach

### Surf City Synagogue/Temple Isaiah surfcitysynagogue.org

2401 Irvine Ave.  
Newport Beach 92660  
714-596-2220  
info@surfcitysynagogue.org  
Rav Eric Dangott  
Cantor Jason Feddy  
Founded: 2004. Classes & Activities: Religious and Hebrew School (K-7); Sisterhood; Adult Education.

## Seal Beach

### Congregation Sholom, Leisure World

PO Box 2901, Seal Beach 90740  
562-431-0113  
Founded 1964. Serves active adult community of Leisure World Seal Beach and surrounding area. Classes & Activities: Hebrew; Melodies for Blessings and Prayers; Torah Study.

## Tustin

### Congregation B'nai Israel cbi18.org

2111 Bryan Ave., Tustin 92782  
714-730-9693  
cbi18@cbi18.org  
Rabbi Elie Spitz

Founded: 1980. Classes & Activities: Preschool; Religious School (K-7); Hebrew High (8-12); Camp B'nai Ruach (summer day camp); Adult Education; Introduction to Judaism; Sisterhood; Men's Club; Chavurot; CBI Coastal; Social Clubs; Youth Groups; Beginning Hebrew; Musical Services; Yiddish Club; Social Action.

## INDEPENDENT CONGREGATIONS & COMMUNITY RABBIS

## Huntington Beach

### Pacific Community of Cultural Jews pccjews.org

3277 Moritz Dr.  
Huntington Beach 92649  
949-592-0999  
pacifcomm@aol.com  
Contact: Alice Selfridge  
Founded: 1998. Serves all of Orange County. Classes & Activities: Philosophers' Café; Film Club; Discussion Groups; Cultural/Holiday Events.

## Seal Beach

### Beit HaLev/House of the Heart galityomtov.com

PO Box 2279, Seal Beach 90740  
562-715-0888 or 562-493-2680  
duets@icloud.com  
Rabbi Galit Levy-Slater  
Founded 2016. Affiliated with Jewish Universalist Movement (UJUC). Serving the community of Leisure World and Seal Beach area.

## Community-Wide

### Jewish Collaborative of Orange County

#### jewishcollaborativeoc.org

Mail: 2240 University Dr.  
Newport Beach 92660  
Services: various locations  
joy@jewishcollaborativeoc.org  
Rabbi and Cantor Marcia Tilchin  
Founded 2016. A geographically mobile, non-denominational organization that offers meaningful Jewish experiences throughout OC.

### Rabbi Larry Seidman, Ph.D. rationalrabbi.com

714-248-5771  
rabbi@rationalrabbi.com  
Community rabbinical services to the unaffiliated and chaplaincy to individuals incarcerated in Orange County; weddings, funerals and other lifecycle events.

### Rabbi Linda Seidman rationalrabbi.com

949-294-1872  
rabbilinda@seidman.net  
Community rabbinical services to the unaffiliated and chaplaincy to individuals incarcerated in Orange County jails; lifecycle events.

### Rabbi Corie Yutkin RabbiCorie.com

310-948-2818  
RabbiCorie@gmail.com  
Reform rabbi available for lifecycle events, pastoral counseling, spiritual support, and tutoring. Experience as an interfaith chaplain and a domestic violence caseworker.

# CONGREGATIONS & RABBIS

## ORTHODOX

### Irvine

#### **Beth Jacob Congregation** **bethjacobirvine.org**

3900 Michelson Dr., Irvine 92612-1765  
949-786-5230  
office@bethjacobirvine.org  
Rabbi Yisroel Ciner  
Founded: 1986. Home to the Irvine Community Mikveh (with Keilim Mikveh for dishes). Only full service synagogue providing 3 services a day, 365 days a year. Ashkenazi and Sephardic minyanim. Classes & Activities: Olam Montessori Jewish Preschool; Religious School (K-6); Adult Education; Seminars; Youth and Teen Programs; NCSY Group.

#### **Young Israel of Orange County** **yioc.org**

Mail: 5319 University Dr., #122  
Irvine 92612  
Services: 3415 Michelson Dr.  
2nd Floor, Irvine 92612  
949-300-8899  
rabbi@yioc.org  
Rav Dov Fischer  
Founded: 2008. Classes & Activities: Open Yeshiva for Teens; Torah and Talmud Classes; Women's Classes; Hebrew Classes; YIOC Women.

## RECONSTRUCTIONIST

### Irvine

#### **University Synagogue** **universitiesynagogue.org**

3400 Michelson Dr., Irvine 92612  
949-553-3535  
office@universitiesynagogue.org

Rabbi Arnold Rachlis  
Cantor Ruti Braier  
Founded: 1987. Classes & Activities: Preschool, Religious School; Adult Education; US Bridges Adult Day Care Cognitive Impairment Program; Lectures and Speaker Series; Women's Connection; Tikkun Olam Programs; Shabbat Dinners; Havurah; Adult Choir.

## REFORM

### Aliso Viejo

#### **Temple Beth El of South Orange County** **tbesoc.org**

2A Liberty, Aliso Viejo 92656  
949-362-3999  
Rabbi Rachel Kort  
Rabbi K'vod Wieder  
Cantor Natalie Young  
Founded 1981. Classes & Activities: Mom & Me; Preschool; Religious School (K-7); Youth Groups (8-12); Teen Programs; Adult Education; Introduction to Judaism; Men's Club; BE Sisters; TBE Connection (55+); Social Action Groups.

### Fountain Valley

#### **Congregation B'nai Tzedek** **cbtfv.org**

9669 Talbert Ave.  
Fountain Valley 92708  
714-963-4611  
office@cbtfv.org  
Rabbi David N. Young  
Cantorial Soloist: Jenna Sagan  
Founding Rabbi Emeritus:  
Stephen Einstein  
Cantor Emerita: Linda Ecker

Founded: 1976. Classes & Activities: Religious School (K-12); Family and Tot Shabbat; Introduction to Judaism; Adult Education; Adult B'nai Mitzvah; Social Action; Sisterhood; Brotherhood; Youth Groups.

### Fullerton

#### **Temple Beth Tikvah** **tbtoc.org**

1600 North Acacia Ave.  
Fullerton 92831  
714-871-3535  
office@tbtoc.org  
Rabbi Nico Socolovsky  
Cantor Michael Avdee  
Founded: 1964. TBT is a vibrant north Orange County Jewish community. Classes & Activities: Early Childhood Learning Center, Religious School, Bar/Bat Mitzvah Training, Adult Education, Interfaith Engagement, Ezra Center Senior Programs.

### Irvine

#### **Congregation Shir Ha-Ma'alot** **shmtemple.org**

3652 Michelson Dr., Irvine 92612  
949-857-2226  
Rabbi Richard Steinberg  
Rabbi Leah Lewis  
Cantor Arie Shikler  
Founded: 1968. Classes & Activities: Torah Time for Tots; Pre-K Programs; Religious School (K-12); Youth Groups; Parent & Family Programs; Adult Learning; Social Justice & Action; Brit Tikvah (families of children with special needs); Support Groups; Youth Music Program.



# CONGREGATIONS & RABBIS



## Laguna Woods

### Reform Temple of Laguna Woods lagunawoodsvillage.com

(click Clubs > Religious)  
Mailing: PO Box 2833  
Laguna Woods 92653  
Services: Clubhouse 1, 24900 Calle Aragon, Laguna Woods 92637  
949-580-1160  
reformtemplelagunawoods@gmail.com

Rabbi Benjamin Kamin  
Cantorial Soloist Jennifer Lewis  
Founded: 1996. Serves the active adult community of Laguna Woods Village and surroundings. Classes & Activities: Adult Education; Social Action; Lectures; Men's Club; Women's Club.

## La Mirada

### Temple Beth Ohr templebethohr.com

15721 E. Rosecrans Ave.  
La Mirada 90638  
714-521-6765  
Office@TempleBethOhr.com  
Rabbi Mark B. Goldfarb  
Rabbi Emeritus Lawrence Goldmark  
Cantorial Soloist Arielle Goldfarb  
Founded: 1956. Classes & Activities: Hebrew and Religious School (K-10); Hebrew Lab; Tot Shabbat; Adult Education; Sisterhood; Brotherhood; Senior Activities.

## Newport Beach

### Temple Bat Yahm tby.org

1011 Camelback St.  
Newport Beach 92660  
949-644-1999  
Senior Rabbi Gersh Zylberman  
Rabbi Emeritus Mark S. Miller  
Rabbi Rayna Gevurtz  
Cantor Jonathan Grant  
Founded: 1973. Classes & Activities: Preschool (3 months-5.5 years); Religious School (K-12); Adult Education; Torah Study; Hebrew; Women of TBY; Youth Group; Social Action; Interfaith Engagement; Distinguished Speaker Series; Camp Yahm Yahm.

## Santa Ana

### Temple Beth Sholom of Orange County tbsoc.com

2625 N. Tustin Ave.  
Santa Ana 92705  
714-628-4600  
information@tbsoc.com

Rabbi Heidi M. Cohen  
Rabbi Emeritus Shelton J. Donnell  
Cantor David Reinwald  
Cantor Emeritus Mark Thompson  
Founded: 1943. The first Jewish congregational presence in Orange County. Classes & Activities: Early Childhood Center; Religious School (K-12); Camp Sholom; Camp Katan; Youth Groups; Interfaith Outreach; Adult Education; Social Action; Bar/Bat Mitzvah; Adult B'nai Mitzvah; Choir; Brotherhood & Sisterhood; Senior Activities; Special Needs inclusion.

## Westminster

### Temple Beth David templebethdavid.org

6100 Hefley St., Westminster 92683  
714-892-6623  
tbdavid@templebethdavid.org  
Rabbi Nancy Rita Myers  
Cantorial Soloist Nancy Linder  
Founded: 1959. Serves West Orange County and Greater Long Beach areas. Classes & Activities: Early Childhood Learning Center; Religious School (K-12); Adult Education; Sisterhood; Brotherhood; Adult and Junior Choir; Social Action.

## SEPHARDIC

## Irvine

### Beth Jacob Congregation bethjacobirvine.org

Sephardic minyan. See full listing on page 83.

# Pre-Planning Your Own Funeral is a Mitzvah

**Jewish law dictates** that a funeral must take place as soon after a death as possible. The stress of planning after a person's passing can be overwhelming for those left behind. For this reason, making your own pre-arrangements is a kindness for your loved ones. It is a mitzvah—a good deed to offer family and friends, relieving them of heavy emotional burden. Allow me to assist you with a free Personal Planning Guide to begin making your wishes be known.

*I proudly serve the following locations and will look forward to hearing from you.*

**Pacific View Memorial  
Park & Mortuary**

Corona Del Mar, CA · COA 507 FD 1176



**Harbor Lawn / Mt. Olive  
Memorial Park & Mortuary**

Costa Mesa, CA · COA 609 FD 1341



Contact me for an appointment and  
ask about Pre-Arrangement Savings

**Basil Luck**  
**Pre-Planning Advisor**  
(949) 351-1931

[basil.luck@dignitymemorial.com](mailto:basil.luck@dignitymemorial.com)

## MOST INSURANCE ACCEPTED

- Delivery & Mail Service Available
- 24/7 Pharmacist Pager/Consult Availability
- Special Cash Prices for 90 Days Supply
- Flu Vaccinations
- Medicare Part B+D Billing

**WHY GO MAIL ORDER?**  
**Our Prices are lower  
& most generics are less!!!**



**SINCE 1975**

**714-540-8911**

[stevensrx@yahoo.com](mailto:stevensrx@yahoo.com)

**M-F 9am-6pm • Sat 10am-1:30pm**

**1525 Mesa Verde Dr. East  
Costa Mesa, CA 92626**

## CUSTOM COMPOUNDING

**For over  
27 Years**



### Specializing In:

- Bio Identical Hormone
- Dental Compounding
- Veterinary Medications
- Any items that are not commercially available

LAA2452897-1

**SOME PEOPLE see  
Draperies... we see *Art***

**FACTORY DIRECT PRICES • EXCLUSIVE DESIGNS WITHOUT THE EXPENSE!**



**UP TO  
70% OFF  
ALL BLINDS & SHADES**

*Every Home A Gallery  
Every Window a Canvas*

**30% OFF SELECTED FABRICS**

Roman Shades • Valances • Bedding • Shutters • Verticals  
Wood Blinds • Motorization Accessories & More!

**Drapery Works**

*Serving Southern California since 1977  
Free In-Home Consultation*

**949.770.5555 • 714.545.4070 • WWW.DRAPERYWORKS.COM**

**1525 Mesa Verde Dr. #127, Costa Mesa, CA 92626**  
10 Day Delivery Available • Contractor Lic 792904



# Plan Ahead!



**Freedom Village** residents receive a 25% discount for life off long-term health care costs and a guarantee of care for life if you outlive your resources.

**Call today to learn more!**

Transportation is available to Temple Judea on Friday evenings.



Continuing Care Retirement Community

23442 El Toro Rd., Lake Forest, CA 92630 • [www.freedomvillage.org](http://www.freedomvillage.org)

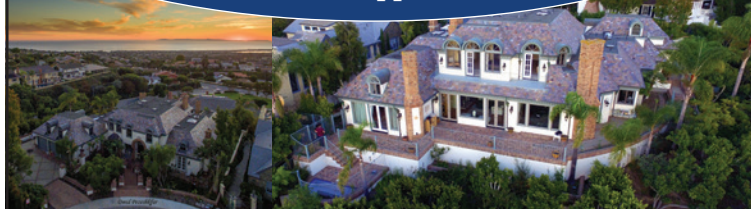
**(949) 340-8108**



Lic. #300606831 COA 143

# LOOKING TO BUY OR SELL REAL ESTATE?

**Call for an appointment!**



**Nancy Aynehchi**

**714-496-8852**

BRE # 01450929

[nancyaynehchi@aol.com](mailto:nancyaynehchi@aol.com)

**100% Client Satisfaction • Hall of Fame Award**



Put my international connections to work for you.

**[www.Firstteam.com/nancyaynehchi](http://www.Firstteam.com/nancyaynehchi)**

# MM<sub>of</sub>OC



# Medical Marijuana Of Orange County

**DO YOU  
SUFFER FROM:**

Migraines  
Cancer  
Depression  
Insomnia  
Nausea  
Chronic Pain  
Anxiety  
Glaucoma  
HIV/AIDS  
Anorexia  
Other Ailments

**Bob Blake, M.D.**

**30+ Years Medical Doctor**  
Formerly Chief of Staff and Chairman of  
the Department of Emergency Medicine  
at Pomerado Hospital in San Diego.

**New Patients Save \$25**

**Free and Confidential  
Pre-Qualification at  
[www.mmofoc.com](http://www.mmofoc.com)**

Compassionate, Confidential & Discreet

**Authentic and  
Fully Verifiable  
Medical Marijuana  
Recommendations**

**949.388.3525** • 32840 Pacific Coast Highway, Suite B, Dana Point, CA 92629

*We are still in the same building at the corner of PCH and Crown Valley Parkway.*

# Melissa Fisher Goldman, LCSW

**Individual, Couple and Family Therapy**

LSW# 26077



**Melissa Fisher Goldman, LCSW** is a Licensed Clinical Social Worker and has been working as a social worker since 2004 and providing private psychotherapy since 2008. Her primary work as a social worker has been in Hospice Care. She has an expertise in end-of-life care as well as bereavement and grief and loss counseling and challenges with growing a family. She has

worked with people from all walks of life with many different reasons for seeking therapy and has found that no matter the reason for which a client seeks counseling it always comes down to coping with what she refers to as Life's Transitions.

***Helping you experience life's transitions  
with ease and comfort***

**714-584-8072**

**[www.melissafishergoldman.com](http://www.melissafishergoldman.com)**

**305 N. Harbor Blvd., Suite #202**

**Fullerton, CA 92832**

# JEWISH ORGANIZATIONS



**Jewish Federation & Family  
Services, Orange County (JFFS)**  
**JewishOC.org**

1 Federation Way, Suite 210  
Irvine 92603  
949-435-3484  
Helpline: 949-435-3460  
Info@JFFS.org

## JFFS COMMUNITY PARTNERS

**The Hebrew Academy**  
**hacds.org**

14401 Willow Lane  
Huntington Beach 92647  
714-898-0051  
admin@hacds.org

**Hillel Foundation of Orange County**  
**OCHillel.org**

1 Federation Way, Suite 210  
Irvine 92603  
949-435-3484  
Lisa@JFFS.org

**Jewish Community Foundation of  
Orange County**  
**jcfc.org**

1 Federation Way, Suite 210  
Irvine 92603  
949-435-3490  
info@jcfc.org

**Merage Jewish Community Center**  
**jccoc.org**

1 Federation Way, Suite 200  
Irvine 92603  
949-435-3400  
thej@jccoc.org

**Tarbut V'Torah Community Day  
School**  
**tarbut.com**

K-5: 5200 Bonita Canyon Dr.  
Irvine 92603  
6-12: Samueli Jewish Campus  
5 Federation Way  
Irvine 92603  
949-509-9500



## ADDITIONAL JEWISH ORGANIZATIONS

**30 Years After**  
[30yearsafter.org](http://30yearsafter.org)  
[info@30yearsafter.org](mailto:info@30yearsafter.org)

**American Israel Public Affairs Committee (AIPAC)**  
[aipac.org](http://aipac.org)  
 PO Box 351389, Los Angeles 90035  
 323-937-1184

**American Jewish Committee (AJC)**  
[ajclosangeles.org](http://ajclosangeles.org)  
 9911 W. Pico Blvd. #1602  
 Los Angeles 90035  
 310-282-8080

**Americans for Peace Now**  
[peacenow.org](http://peacenow.org)  
 5870 West Olympic Blvd.  
 Los Angeles 90036  
 323-934-3480  
[apnwest@peacenow.org](mailto:apnwest@peacenow.org)

**Anti-Defamation League (ADL)**  
[orangecounty.adl.org](http://orangecounty.adl.org)  
 1201 Dove St., Ste. 550  
 Newport Beach 92660  
 949-679-3737  
[plevi@adl.org](mailto:plevi@adl.org)

**Beit T'Shuva**  
[beittshuvah.org](http://beittshuvah.org)  
 8831 Venice Blvd.,  
 Los Angeles 90034  
 310-204-5200

**Bet Tzedek Legal Services**  
[bettzedek.org](http://bettzedek.org)  
 3250 Wilshire Blvd. #1300  
 Los Angeles 90010  
 323-939-0506

**Bubbe & Zayde's Place**  
[bubbeandzaydesplace.com](http://bubbeandzaydesplace.com)  
 1534 East 21st St., Santa Ana 92705  
 714-928-5030

**Family Autism Network (FAN)**  
[faninfo.org](http://faninfo.org)  
**Grandparent Autism Network (GAN)**  
[ganinfo.org](http://ganinfo.org)  
 360 E. First St., #202  
 Tustin 92780  
 714-573-1500

**The Friendship Circle**  
[FriendshipCircleOC.org](http://FriendshipCircleOC.org)  
 2240 University Dr.  
 Newport Beach 92660  
 949-721-9800  
[info@FriendshipCircleOC.org](mailto:info@FriendshipCircleOC.org)

**Hadassah**  
[hadassah.org/southerncalifornia](http://hadassah.org/southerncalifornia)  
 562-420-5055  
[lboc@hadassah.org](mailto:lboc@hadassah.org)

**Heritage Pointe**  
[heritagepointe.org](http://heritagepointe.org)  
 27356 Bellogente  
 Mission Viejo 92691  
 949-364-9685

**Irvine Hebrew Day School**  
[irvinehebrewday.org](http://irvinehebrewday.org)  
 2625 N. Tustin Ave., Santa Ana 92705  
 949-478-6818  
[info@irvinehebrewday.org](mailto:info@irvinehebrewday.org)

**Israeli American Council**  
[israeliamerican.org](http://israeliamerican.org)  
 818-836-6700  
[info@israeliamerican.org](mailto:info@israeliamerican.org)

**Jewish Addiction Awareness Network**  
[jaanetwork.org](http://jaanetwork.org)  
 23052-H Alicia Pkwy., #118  
 Mission Viejo 92692  
 949-424-5226  
[marla@JAANetwork.org](mailto:marla@JAANetwork.org)

**Jewish Communal Professionals of Southern California**  
 PO Box 713, N. Hollywood 91603  
[jcpsocal.org](http://jcpsocal.org)  
[socaljcpsc@gmail.com](mailto:socaljcpsc@gmail.com)

**Jewish Federations of North America (JFNA)**  
[jewishfederations.org](http://jewishfederations.org)  
 Serving 153 Jewish Federations and over 300 affiliated communities across North America. Recipient of JFFS Core Grants.

**Jewish Free Loan Association**  
[jfla.org](http://jfla.org)  
 6505 Wilshire Blvd., Ste 715  
 Los Angeles 90048  
 323-761-8830  
[info@jfla.org](mailto:info@jfla.org)

**Jewish National Fund (JNF)**  
[www.jnf.org](http://www.jnf.org)  
 300 Spectrum Center Dr., 4th Fl.  
 Irvine 92628  
 949-260-0400  
[lgrier@jnf.org](mailto:lgrier@jnf.org)

# JEWISH ORGANIZATIONS

**Jewish War Veterans**  
[ca.jwv.org/local-posts](http://ca.jwv.org/local-posts)

**JQ International**  
[jqinternational.org](http://jqinternational.org)  
 8851 Santa Monica Blvd.  
 West Hollywood 90069  
 323-417-2627

**JStreet**  
[jstreet.org](http://jstreet.org)  
 323-634-0339  
[info@jstreet.org](mailto:info@jstreet.org)

**Laguna Woods Village Clubs**  
[lagunawoodsvillage.com](http://lagunawoodsvillage.com)

(click on Clubs)  
 Hadassah  
 Hebrew Club  
 Heritage Pointe  
 Jewish Culture Club  
 Jewish War Veterans  
 National Council of Jewish Women  
 Women's American ORT

**Moishe House**  
[josh.hillinger@moishehouse.org](mailto:josh.hillinger@moishehouse.org)

**OC Israeli**  
[ocisraeli.org](http://ocisraeli.org)

**Orange County Community Scholar Program (CSP)**  
[occsp.org](http://occsp.org)  
 5 Shasta, Irvine 92612  
 949-682-4040

**Orange County Jewish Bar Association**  
[ocjba.org](http://ocjba.org)  
 PO Box 6130, Newport Beach 92658  
 949-440-6700 x257



**Orange County Jewish Genealogical Society**  
[ocjgs.org](http://ocjgs.org)  
 PO Box 7141, Newport Beach 92658  
 949-423-3746  
[info@ocjgs.org](mailto:info@ocjgs.org)

**ORT America**  
[ortamerica.org](http://ortamerica.org)  
 6435 Wilshire Blvd. #305  
 Los Angeles 90048  
[western@ortamerica.org](mailto:western@ortamerica.org)

**Rohr Jewish Learning Institute**  
[myjli.com](http://myjli.com)  
 888-YOUR-JLI

**Sharsheret**  
[sharsheret.org](http://sharsheret.org)  
 1631 Pontius Ave., Los Angeles 90025  
 866-474-2774  
[info@sharsheret.org](mailto:info@sharsheret.org)

**Shevet Tapuz: Israeli Scouts of OC**  
[ocshevet.org](http://ocshevet.org)  
 949-235-6050  
[tapuzmerakez@gmail.com](mailto:tapuzmerakez@gmail.com)



B'NAI MITZVAHS ❖ WEDDINGS ❖ TEMPLE EVENTS  
FUNDRAISERS ❖ HOLIDAY PARTIES ❖ TRIBUTE DINNERS

## THE AMAZING BOTTLE DANCERS™

*The Surprise Highlight of Your Event!*



Isn't the success of your event worth a minute of your time?  
Watch our video and see why we're  
**THE ULTIMATE ADDITION**  
to everything you're planning!

**800-716-0556 ❖ WWW.BOTTLEDANCERS.COM**

## KAUFMAN STEINBERG

FAMILY LAW ATTORNEYS LIMITED LIABILITY PARTNERSHIP

**CLIENT-FOCUSED, RESULTS-ORIENTED**



Jordon P. Steinberg



Stephen J. Kaufman,  
Partner

HIGHLY SKILLED,  
KNOWLEDGEABLE &  
EXPERIENCED  
ATTORNEYS TO GUIDE CLIENTS  
REGARDING:

Divorce • Child and Spousal Support  
Custody/Parenting Time  
Family Law Mediation • Premarital  
Agreements

*Treating clients fairly and honestly while  
trying to preserve assets and relationships.*

phone 949.757.9000 | fax 949.757.0028

[www.KaufmanSteinberg.com](http://www.KaufmanSteinberg.com)

2020 Main Street, Suite 345  
Irvine, California 92614



FEIG LAW FIRM

## Preparing Today Eases Tomorrow

WILLS • TRUSTS • PROBATE •  
CONSERVATORSHIPS • FAMILY LAW



SCOTT FEIG  
ATTORNEY AT LAW

**949-689-9715**

FeigLawFirm@gmail.com • 18 Truman, Suite 105 • Irvine, CA 92620

[FEIGLAWFIRM.COM](http://FEIGLAWFIRM.COM)

## The Golden Dreidle



**GoldenDreidle.com**

**2626 Dupont Dr., Irvine • (949) 955-0900**

*Since 1991, For All Your Judaica Needs*

**Gillian M. Stein**  
Attorney at Law  
Estate Planning

5319 University Dr. #626  
Irvine, CA 92612

Email: [gillstein@steintrusts.com](mailto:gillstein@steintrusts.com)

Tel & Fax: 949-725-0244

# Family Services



Jewish Federation & Family Services  
ORANGE COUNTY

## Silver Streak Transportation: Volunteer Drivers Needed



You can give the gift of independence to a person who has lost their mobility and is isolated at home. Our drivers help seniors, people with disabilities, cancer patients, and domestic violence survivors get to medical appointments, receive cancer treatment, go shopping and connect to the world. The profound difference our volunteers make is truly extraordinary.

### Our Volunteer Drivers:

- Provide rides using their own vehicles
- Choose the times, days and areas they wish to drive
- Drive as much or little as they want
- Receive reimbursement for mileage and parking costs
- Are at least 19 years old with a valid CA driver license and good driving record

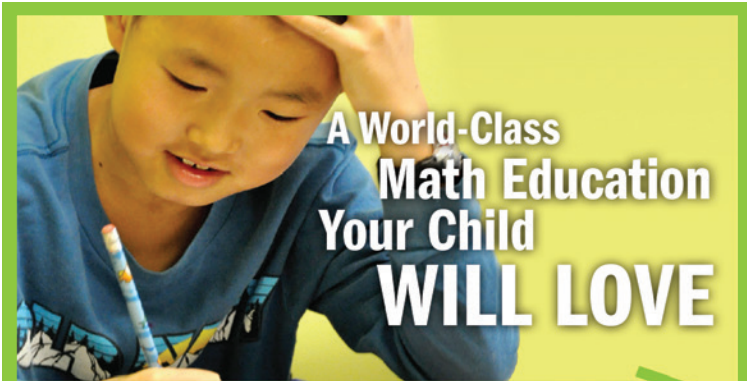
### From one of our volunteer drivers:

“I’ve learned so much from Lila, who lost her sight when she was 10. I help her get around and she has opened up a whole world to me. She is one of the most incredible people I’ve ever met.”

For information on additional JFFS volunteer opportunities, visit [JewishOC.org/Volunteer](https://JewishOC.org/Volunteer) or contact **Stephanie Chappell: SChappell@JFFS.org** or **949.435.3460, ext. 295.**

**[JewishOC.org/FamilyServices](https://JewishOC.org/FamilyServices)**





## A World-Class Math Education Your Child WILL LOVE

A World-Class Math Education. Your Child Will Love Our award-winning, after school program. K-12 students build excellence in **MATH & CRITICAL THINKING**.



RSM-Irvine • (949) 551-1777  
3996 Barranca Pkwy, #110 Irvine, CA 92606  
[www.RussianSchool.com/irvine](http://www.RussianSchool.com/irvine)

## ZECHTER MUSIC CENTER



Jewish Federation & Family Services  
ORANGE COUNTY

Strike a chord for your young *Mozart* or budding **ROCK STAR** with **FREE MUSIC LESSONS**



**Register now** for **FREE** music classes  
at the **Sol & Bunny Zechter Music Center**

**Open to all Jewish 5th - 12th graders  
in Orange County**

Guitar — Keyboard — Wind/Brass  
**NEW** this year: Strings (Violin, Viola)

**At Tarbut V'Torah Community Day School (Irvine)**  
Wednesday afternoon/evening classes during the school year

Amazing arts activities (free or subsidized, with family)  
Fall, winter and spring sessions

**Learn more and register at [JewishOC.org/Music](http://JewishOC.org/Music)**

The Sol & Bunny Zechter Music Center of  
Jewish Federation & Family Services is very proud to partner with:



UCI Claire Trevor  
School of the Arts



OC CHILDREN'S  
THERAPEUTIC ARTS

**[JewishOC.org/Music](http://JewishOC.org/Music)**



## Transformative EXPERIENCES

## Lifelong CONNECTIONS

## Making Happy Campers for Over 60 years

Wilshire Boulevard Temple Camps  
[wbtcamps.org](http://wbtcamps.org)



# ADVERTISING INDEX

## ACADEMIC

Chapman University 18

## ATTORNEYS

FEIG Law Firm 91

Gillian M. Stein 91

Kaufman Steinberg 91

## CAMPS

WBT Camps 93

## CATERING

OC Kosher 98

## CELEBRATIONS & EVENTS

24 Carrots 96

24 Carrots 97

The Amazing Bottle Dancers 91

UCI University Club of Irvine 79

## CONGREGATIONS

Congregation B'nai Israel 3

Congregation B'nai Tzedek 5

Congregation Shir Ha-Ma'alot 5

Temple Bat Yahm 28

Temple Beth David 79

Temple Beth El 8

Temple Beth Emet 64

Temple Judea 33

Young Israel of Orange County 56

University Synagogue 79

## DROWNING PREVENTION

Crews4Kids 100

## EDUCATION

Hebrew Academy 61

Irvine Hebrew Day School 8

Olam Jewish Montessori of Beth Jacob 77

Russian School of Mathematics 93

Tarbut V'Torah 40

The Prentice School 61

## FINANCIAL/ESTATE PLANNING

Jewish National Fund 78

Klein Financial 63

Stoddard Group 7

Stoddard Group 99

## FOOD & BEVERAGE

Andrei's Conscious Cuisine 39

Benjie's 98

Blueberry Hill 54

## HEALTH

Berkeley Disability 98

Dr. Blake 87

Hillary Buff 98

Melissa Fisher Goldman LCSW 87

Steven's Pharmacy 86

## HOME IMPROVEMENT

Action Awnings 63

Drapery Works 86

Handy Crew Services 98



# ADVERTISING INDEX

Swan Pools 78

## INSURANCE

Allan Silverman 33  
State Farm - Jason Starkman 5

## JUDAICA

Golden Dreidle 91

## NON-PROFIT ORGANIZATIONS

B'nai B'rith 63  
Friends of Yad Sarah 95  
Jewish Community Foundation 2

## REAL ESTATE

Attila Molner-Realty One Group 63  
Averelle Real Estate 56  
Nancy Aynehchi-First Team Real Estate 87

## RECREATIONS

Dance by Diana 63  
OC Fitness Coach 61  
Merage Jewish Community Center 4

## SENIORS

Basil Luck 86  
Bubbe and Zayde's Place 33  
Freedom Village 87  
Heritage Pointe 34

# GET GUARANTEED, HIGH-RATE INCOME FOR LIFE.

Much-needed help for Israel.

Make a Yad Sarah Gift Annuity part of your fixed-income or retirement strategy and lock in attractive, high-rate income – for life.



| AGE | RATE  | TAX-FREE PORTION* |
|-----|-------|-------------------|
| 65  | 6.0%  | 73.8%             |
| 70  | 6.5%  | 76.5%             |
| 75  | 7.1%  | 78.6%             |
| 80  | 8.0%  | 80.6%             |
| 85  | 9.5%  | 84.0%             |
| 90  | 11.3% | 85.8%             |

\*For gift annuities established by Nov. 30, 2016

- ✓ Secure lifetime income for one or two individuals.
- ✓ Immediate income tax charitable deduction.
- ✓ Substantial percentage of annual tax-free income throughout lifetime.

FOR MORE INFORMATION, CONTACT ADELE GOLDBERG, EXECUTIVE DIRECTOR, AT [ADELE@FRIENDSOFYADSARAH.ORG](mailto:ADELE@FRIENDSOFYADSARAH.ORG)

866.YAD.SARAH  [YadSarahFriends](https://www.facebook.com/YadSarahFriends) [FriendsOfYadSarah.org](https://www.FriendsOfYadSarah.org)



THE  
COLONY  
HOUSE

401 N Anaheim Blvd  
Anaheim, CA 92805

714.576.8989  
[colonyhouseanaheim.com](http://colonyhouseanaheim.com)





305 N Spurgeon Street  
Santa Ana, CA 92701

800.717.1545  
[the1912.com](http://the1912.com)



**Benjies**  
Since 1967

**N.Y. DELI, RESTAURANT & BAR**

**HAPPY HOUR**  
3-7PM

**DAILY SPECIALS!**

**BREAK THE FAST WITH US!**  
Join us for Rosh Hashanah and Yom Kippur

**FIND US ON FACEBOOK!**

**BREAKFAST • LUNCH • DINNER**

**714.541.6263**

1828 N. Tustin Ave., Santa Ana (1 block North of 17th St.)  
OPEN 7 DAYS, 7AM TO 9PM  
[www.benjiesdeli.com](http://www.benjiesdeli.com)

**CATERING FOR ALL OCCASIONS!**

MasterCard VISA DISCOVER

Has your Social Security Disability claim been denied?  
We can help.



The Premier Disability Advocacy Group  
in Southern California

**B BERKLEY DISABILITY**

[www.BerkleyDisability.com](http://www.BerkleyDisability.com) | (714) 871-6440  
1440 N. Harbor Boulevard, Suite 250 | Fullerton

**Passover shopping starts here!**

**KosherMarket**

**Glatt Kosher Meat & Deli**  
**Full Line Kosher Grocery & Baked Goods**

- Full Deli - Outdoor Patio Dining - Mashgiach on Premises  
Under Supervision of the Rabbinical Council of Orange County (R.C.O.C.)  
Open Mon-Thurs: 9am-7pm Fri: 8am-2pm, Sun: 9am-4pm

**714-838-3108 - ockosher.com**  
688 El Camino Real - Tustin, CA. 92780 In the El Camino Plaza

**NO JOB TOO BIG OR TOO SMALL**

From electrical, plumbing, painting, flooring, and any remodeling project  
*We do it all!*

**HandyCrew**  
Services, Inc.  
**714-509-5045**

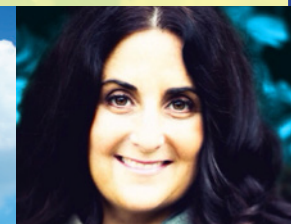
[www.ochandycrow.com](http://www.ochandycrow.com)

Angie's list LICENSED & INSURED CSLB License #990435 yelp

**Psychotherapist for Children,  
Teens, Parents & Families**



*Inspiring your family to live  
a happy and healthy life!*



**Hilary Buff, Psy.D**  
**858.705.1450**  
[drhilarybuff@me.com](mailto:drhilarybuff@me.com)  
[www.drhilarybuff.com](http://www.drhilarybuff.com)





# 5.0% APY

THE Fixed Income Alternative  
(6-8% Available for Large Deposits)

## FOR 1 YEAR, INTEREST PAID MONTHLY

- FIRST POSITION COMMERCIAL MORTGAGE NOTES (FPCMs) ARE SAFER ALTERNATIVES
- THEY ARE 12 MONTH RATES SECURED BY HIGH-VALUE COMMERCIAL REAL ESTATE
- LOW \$25,000 MINIMUM
- FPCMs ARE NOT AN ANNUITY OR INSURANCE PRODUCT
- NO FEES TO BUY OR MAINTAIN\*



STODDARD GROUP

THESTODDARDGROUP.COM  
949.558.3181

# Why The Drowning Institute?

because drowning is the #1 accident taking your kids and we have solutions.

Scientific research & Psychology are the keys to reversing this epidemic. The key issues: swim programs & lifeguard training. The solutions are research and training parents & kids. The Institute will send you age specific information & new real solutions for your kids.

## TO DONATE TO

The Drowning Institute

**Visit:** [DrowningInstitute.org](http://DrowningInstitute.org)

We need your generous help.

and we will send you

The Happy Hero Lifeguard Training

and your own Hero pin!



**FOR SPEAKING  
ENGAGEMENTS  
& PROGRAMS:**

[peter@crewsswimming.com](mailto:peter@crewsswimming.com)



## Peter Ruffu

*Director - The Drowning Institute*

*Author of: The Cure For Drowning*

*Available soon - Pre-order Now*



**To order your safety package go to:  
[DrowningInstitute.org](http://DrowningInstitute.org)**

**The most popular packages are:**

- Babies and water
- So you own a pool
- You ARE a lifeguard
- Traditional swim - a serious problem



**A.S.K. Scholarships,  
If you need a scholarship, just ASK.**  
(Sponsored by Jlife)

**Join the solution to drowning NOW visit: [DrowningInstitute.org](http://DrowningInstitute.org)**